

2009 - 2010 BENCHMARKING DATA

Edexcel Entry Level BTEC Certificates in Life Skills and Skills for Working Life

This document relates to the completions and achievements leading to certification in the academic year from September 2009 to August 2010 for the Edexcel Entry Level BTEC Certificates in Life Skills and Edexcel Entry Level BTEC Certificates in Skills for Working Life. It contains the aggregated benchmarking grade boundary statistics for which there is an overall grade for those learners who have completed their programmes of study.

This benchmarking achievement data aims to assist centres seeking a point of reference for their learner achievements against national rates.

Details of the specifications for the Entry Level BTEC Certificates can be found here: www.edexcel.com/quals/btec-entry.

The data is presented in two formats; namely in a table by qualification title in percentage achievement and in a bar chart. The Entry Level BTEC Certificates in Life Skills and Entry Level BTEC Certificates in Skills for Working Life have the following overall qualification grades:

- Entry 3 (E3)
- Entry 2 (E2)
- Entry 1 (E1)
- No grade

Please note that E1 is not available for learners undertaking the Entry Level BTEC Certificates in Skills for Working Life that registered after September 2006.

These qualifications have points on the DfE School and College Achievement and Attainment Tables (SCAAT).

Notes

Please note that there are many factors that impact on the validity and reliability of these statistics, including:

- The data shows the percentage of completions in terms of overall qualification grade for the qualification titles.
- This data is extracted after appeals and enquiries about results (EARs) have been resolved.
- It contains the aggregated benchmarking grade boundary statistics for which there is an overall grade or grades for those learners who have completed their programmes of study on Edexcel Entry Level BTEC Certificates, which are accredited and regulated through Ofqual. The data does not include BTEC Entry qualifications accredited on the (unregulated) BTEC Customised Framework.

- The data has not been moderated and is raw achievement data only.
- The results are against each individual title or accredited specification.
- It should be noted that there are varying patterns of delivery; for instance, these qualifications are commonly delivered over one, two or three years. Equally there is wide variance in the modes of study (full-time, evening class, day release, distance learning, block release).
- There is no standard length for the programme of study associated with BTEC qualifications and there are wide variations in custom and practice.
- Learners are registered with Edexcel for a period of up to five years and can complete at any time within this period. The achievements, therefore, may not directly relate to 2009/10, as learners may have studied over an extended period in certain cases. The results were, however, reported in 2010.
- Given the specialist nature of many BTEC qualifications, the data generated at qualification level is particularly vulnerable to misinterpretation. We draw attention of centres and other users of this data to the distinctive nature of each of the qualifications covered in this data and emphasise that the data should not be used to compare achievements across the qualification types.

Accreditation of BTEC Entry qualifications

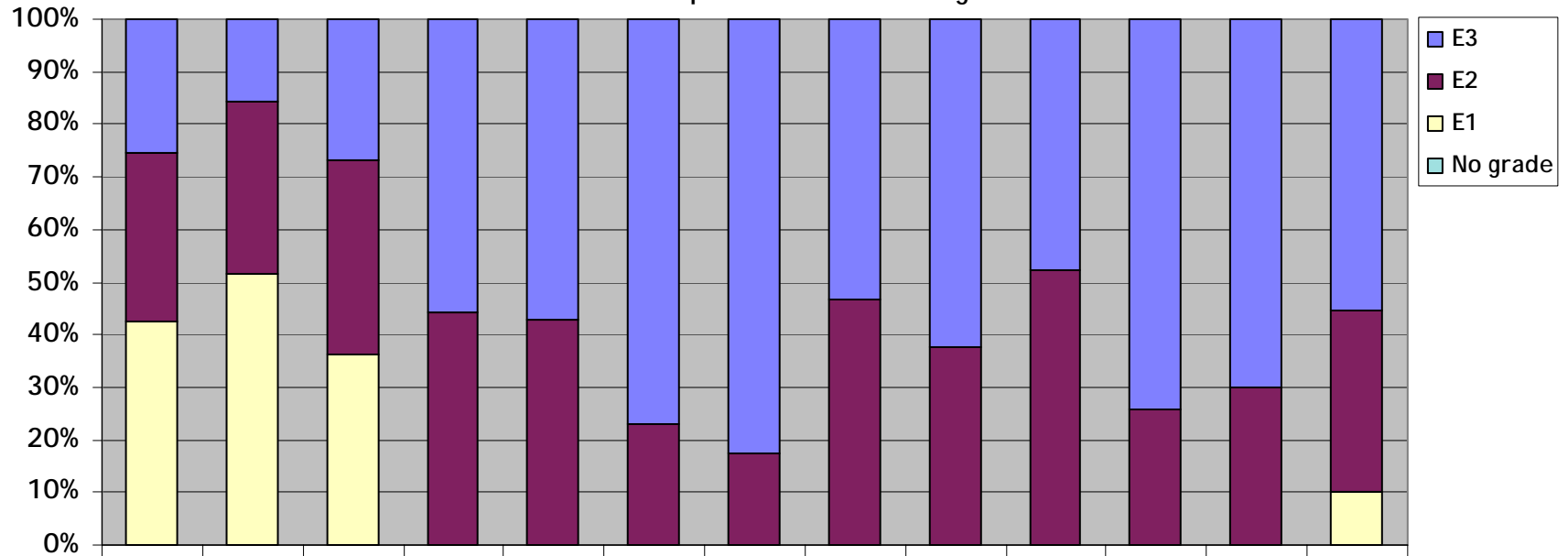
The current suite of BTEC Entry qualifications is accredited until 31 August 2010, and learners registered on these qualifications prior to this date will have until 31 August 2012 to complete the qualifications and be certificated. From 1 September 2010, centres wishing to deliver vocational qualifications at Entry Level in the QCF will need to deliver Foundation Learning qualifications. For more information, please see the following link:
www.edexcel.com/quals/flt.

2009-2010 results for the Edexcel Entry Level BTEC Certificates in Life Skills and Skills for Working Life

Qualification Titles	Overall qualification Grade Percentages %			
	E3	E2	E1	No grade
Life Skills (Citizenship and Community Studies) (CIT)	25.5	32.1	42.4	0.0
Life Skills (Independent Living Skills) (IND LIV)	15.8	32.7	51.5	0.0
Life Skills (Relationships) (REL)	26.7	37.1	36.2	0.0
Skills for Working Life (Arts and Media) (A&M)	55.6	44.3	n/a	0.1
Skills for Working Life (Business, Administration and Retail) (BA&R)	57.3	42.7	n/a	0.0
Skills for Working Life (Hair and Beauty) (H&B)	76.9	23.1	n/a	0.0
Skills for Working Life (Health and Social Care) (H&SC)	82.5	17.5	n/a	0.0
Skills for Working Life (Hospitality and Catering) (H&C)	53.2	46.8	n/a	0.0
Skills for Working Life (Information and Communication Technology) (ICT)	62.3	37.7	n/a	0.0
Skills for Working Life (Land Based) (LAND)	47.8	52.2	n/a	0.0
Skills for Working Life (Practical Skills) (PS)	74.3	25.7	n/a	0.0
Skills for Working Life (Sport and Recreation) (S&R)	70.0	30.0	n/a	0.0
Average (all areas)	55.5	34.5	10.0	0.0

Entry Level BTEC Certificates

Grades awarded September 2009 to August 2010



	CIT	IND LIV	REL	A&M	BA&R	H&B	H&SC	H&C	ICT	LAND	PS	S&R	Total
E3	25.5%	15.8%	26.7%	55.6%	57.3%	76.9%	82.5%	53.2%	62.3%	47.8%	74.3%	70.0%	55.5%
E2	32.1%	32.7%	37.1%	44.3%	42.7%	23.1%	17.5%	46.8%	37.7%	52.2%	25.7%	30.0%	34.5%
E1	42.4%	51.5%	36.2%										10.0%
No grade	0.0%	0.0%	0.0%	0.1%	0.0%	0.0%	0.0%	0.0%	0.0%	0.0%	0.0%	0.0%	0.0%