



ELECTRONIC DATA INTERCHANGE (EDI)

REQUIREMENTS FOR  
CENTRE MANAGEMENT  
INFORMATION SYSTEM (CENTRE MIS)  
PROVIDERS

Vocational Programmes

FEBRUARY 2008

VERSION 6.0

Date	Version	Description of Amendment	Author	Approved by
28/02/2001	5.0	Revision of EDI formats for GNVQ/VCE Qualifications	LP	DS
09/07/2002	5.1	Revision of EDI formats for Key Skills/Adult Basic Skills and New BTEC First and National Qualifications	LP	AR
30/08/2004	5.2	No format change - revision of document (draft)	MP	TS
17/01/2005	5.2	Final version 5.2	MP	TS
25/02/2008	6.0	New version to include QCA codes and ULN	RC	DS

# EDEXCEL EDI Requirements for CENTRE MIS Providers

## 1 TABLE OF CONTENTS

1	TABLE OF CONTENTS.....	2
2	INTRODUCTION .....	4
2.1	BACKGROUND .....	4
2.2	DOCUMENT REVISION .....	5
2.3	THE AUDIENCE FOR THIS DOCUMENT .....	6
3	REQUIREMENTS FOR CENTRES TAKING PART IN EDI.....	7
4	CONFIGURATION AND CONVENTIONS .....	7
5	REQUIREMENTS FOR CENTRE MIS PROVIDERS .....	7
6	FUNCTIONAL REQUIREMENTS.....	7
7	VALIDATION REQUIREMENTS.....	8
8	TESTING REQUIREMENTS .....	8
9	CONTACTING EDEXCEL.....	8
10	THE EDI AGREEMENT .....	9
11	CONFIGURATION AND CONVENTIONS.....	10
11.1	TRANSFER ARCHITECTURE .....	10
11.2	APPROVED FILE TRANSFER METHODS .....	11
11.3	FILE NAMING CONVENTIONS .....	12
11.4	EDEXCEL ELECTRONIC DATA INTERCHANGE.....	13
11.5	APPLICATION LEVEL SPECIFICATION .....	14
11.6	TERMS USED IN THE EDIFACT SPECIFICATION.....	14
12	EDI FILE FORMATS.....	15
12.1	EDEXCEL DEFINED SERVICE ELEMENTS.....	15
12.2	SENDER ID/RECIPIENT ID .....	15
12.3	INTERCHANGE CONTROL REFERENCE/FUNCTIONAL GROUP .....	15
12.4	ACKNOWLEDGEMENT REQUEST .....	15
12.5	APPLICATION SENDER/RECIPIENT IDENTIFIER .....	15
12.6	EDI MESSAGE SPECIFICATION .....	16
12.6.1	<i>UNB - Interchange Header.....</i>	<i>16</i>
12.6.2	<i>UNZ - Interchange Trailer.....</i>	<i>17</i>
12.6.3	<i>UNG - Functional Group Header.....</i>	<i>18</i>
12.6.4	<i>UNE - Functional Group Trailer.....</i>	<i>19</i>
12.6.5	<i>UNH - Message Header.....</i>	<i>20</i>
12.6.6	<i>UNT - Message Trailer.....</i>	<i>21</i>
12.6.7	<i>EDEXCEL PROGRAMMES/MODULES BASE DATA (BDEDEX).....</i>	<i>22</i>
12.6.8	<i>NVQ/GNVQ/VCE BASE DATA (BDNCVQ) .....</i>	<i>244</i>
12.6.9	<i>MODERN APPRENTICESHIP SCHEME BASE DATA (BDMASD) .....</i>	<i>266</i>
12.6.10	<i>STUDENT REGISTRATION DATA (REGIST) .....</i>	<i>28</i>
12.6.11	<i>REGISTRATION NUMBER ACKNOWLEDGEMENT (REGACK) .....</i>	<i>300</i>
12.6.12	<i>STUDENT RESULTS (RESULT) .....</i>	<i>311</i>

## EDEXCEL EDI Requirements for CENTRE MIS Providers

12.6.13	RESULTS ACKNOWLEDGEMENT (RESACK) .....	333
12.6.14	TIMETABLES (TIMETB) .....	355
12.6.15	TEST/PORTFOLIO ORDERING (ORDERS) .....	366
12.6.16	TEST/PORTFOLIO RESULTS ACKNOWLEDGEMENT (TSTRES) .....	377
12.6.17	REQUEST INFORMATION (REQINF) .....	388
12.6.18	GENERAL COMMUNICATION (GENCOM) .....	400
	MESSAGE TRANSMISSION DIRECTIONS .....	411
14	CENTRE MIS - SUGGESTED MINIMUM FUNCTIONALITY .....	411
15	DATA TRANSFER AUDIT CHECKS.....	422

## EDEXCEL EDI Requirements for CENTRE MIS Providers

### 2 INTRODUCTION

#### 2.1 Background

Edexcel supports EDI transfers of:

- Student Registrations (from Centres to Edexcel)
- Student Results (from Centres to Edexcel)
- Registration Numbers (from Edexcel to Centres)
- Base Data (from Edexcel to Centres)
- Student Results Acknowledgement (from Edexcel to Centres)
- GNVQ/VCE/Key Skills/Adult Basic Skills Timetables (from Edexcel to Centres)
- GNVQ/VCE/Key Skills/Adult Basic Skills Ordering (from Centres to Edexcel)
- GNVQ/VCE/ Key Skills/Adult Basic Skills Test/Portfolio Results (from Edexcel to Centres)
- Request Base Data and Timetable Information (from Centres to Edexcel)

We are able to receive and send EDI data using the following transfer methods:

- Redstone - ([www.redstone.co.uk](http://www.redstone.co.uk))
- AVCO ([www.avcosystems.com](http://www.avcosystems.com))
- RM - Research Machines ([www.rm.co.uk](http://www.rm.co.uk))
- Internet EMAIL

Please see section 11 for further information.

## EDEXCEL EDI Requirements for CENTRE MIS Providers

### 2.2 Document Revision.

This document is a new Version 6.0. The changes to this document cater for:

Introduction of QCA Qualification Accreditation Number (QAN) and QCA unit codes

Introduction of Unique Learner Number (ULN)

Extension of Form/Order Number from 6 to 12 characters

Addition of BTEC NQF logic Formula. (eligibility requirement)

Additions and changes to the new version 6.0 have been shaded in order for them to be easily identified e.g.

Qualification Accreditation Number	8A	0	The accredited QCA qualification code.
------------------------------------	----	---	--

## EDEXCEL EDI Requirements for CENTRE MIS Providers

### 2.3 The Audience for this Document

This document is aimed at Centre Management Information System (CENTRE MIS) providers, i.e. those centres and commercial software houses who provide software supporting EDEXCEL processes. The majority of centres with computerised administration will use proprietary software. Some larger centres will, however, write and support their own software.

The purpose of this document is to describe clearly the informational and functional requirements for systems that will interface with EDEXCEL via EDI. The document should provide all the information required for setting up such an interface.

This document is subject to change and under configuration control. If you have any doubts as to whether you have the correct version please check the version number with the EDEXCEL EDI team.

## EDEXCEL EDI Requirements for CENTRE MIS Providers

### 3 REQUIREMENTS FOR CENTRES TAKING PART IN EDI

In order for centres to take part in EDI with EDEXCEL the following are required:

- CENTRE MIS with EDI interface
- A Modem
- One of the following:
  1. A communication package provided by a Value Added Network (VAN) Provider e.g. Redstone, RM or AVCO.
  2. Access to Internet EMAIL in order to send data to and receive data from EDEXCEL.

The EDEXCEL email address is

[<your centre number>@edidata.edexcel.org.uk](mailto:<your centre number>@edidata.edexcel.org.uk).

This should only be used for EDI Data transfers.

The transfer of data electronically inevitably results in different types of problems from those encountered using paper-based procedures. The EDI Association has given this some thought and has produced an Interchange Agreement Document. The purpose of this document is to clarify and make explicit the interface between EDI participating bodies. EDEXCEL uses this as a basic contract for EDI. This document is advisory and not legally binding (see Section 10).

### 4 CONFIGURATION AND CONVENTIONS

In setting up EDI EDEXCEL has, wherever possible, adhered to currently existing formatting standards. Details of the configuration and conventions adopted are given in Section 11.

### 5 REQUIREMENTS FOR CENTRE MIS PROVIDERS

In order for EDEXCEL and CENTRE MIS providers to offer and take part in EDI it is essential that the standards and conventions described are adhered to. It is also desirable that an agreement be formed on the basic functional, validation and testing requirements of systems that will interface to EDEXCEL.

The requirements below are classified as either 'essential' or 'recommended'. Essential requirements are those which are critical to the successful running of EDI with centres. Recommended are those requirements, which, if implemented, will smooth the process of administration between EDEXCEL and centres.

### 6 FUNCTIONAL REQUIREMENTS

## EDEXCEL EDI Requirements for CENTRE MIS Providers

- It is **essential** that the CENTRE MIS is capable of producing and reading the EDIFACT data files as defined in Section 12.
- It is **essential** that all students are uniquely identified by their centre reference number, to allow cross matching against the EDEXCEL registration number.
- It is **essential** that one, and only one, transmission of information is made per student file type.
- The CENTRE MIS must allow repeated extraction of student grade information (two year students will report interim grades after only one year). Unit grades should, however, be reported once only, and not re-reported unless the grade is changed.
- It is important that data integrity is maintained between the centre database and the EDEXCEL database. Certain changes to student details are made through Edexcel Online(e.g. programme transfers and student name changes). The CENTRE MIS must allow the user to make local changes.

### 7 VALIDATION REQUIREMENTS

- It is **essential** that all student data entry is validated against the basedata provided by EDEXCEL.
- It is recommended that validation checks be made against certain data types. Details of validation checks are given in Section 12.
- It is recommended that the CENTRE MIS incorporate basic audit of file receipts as defined in Section 14.

### 8 TESTING REQUIREMENTS

It is **essential** that the CENTRE MIS provider provides EDIFACT results and registration data for data format testing, and confirm that the reading of EDIFACT programme definition and registration acknowledgement data has been tested. This is only required of the CENTRE MIS provider, not of each centre using the CENTRE MIS subsequently.

It is **essential** that the CENTRE MIS provider take part in a transmission test with EDEXCEL before transmitting 'real' data. Please contact the Edexcel EDI Team for details.

### 9 CONTACTING EDEXCEL.

Please direct any EDI related queries to Edexcel Customer Services on 0844 576 0026.

# EDEXCEL EDI Requirements for CENTRE MIS Providers

## 10 THE EDI AGREEMENT

### THE ELECTRONIC DATA INTERCHANGE ASSOCIATION (EDIA)

#### COMMENTARY

- 1 The Standard Interchange Agreement ("IA") was produced by the Legal Advisory Group of the EDI Association of UK. The Council of the Association approved it on March 7 1989 and strongly recommends its use by all parties using EDI with their trading partners in commerce, trade and transport.
- 2 The IA governs the conduct of the parties using EDI and sets out those rules which are applicable to the general use of EDI.
- 3 The IA is intended to be used in conjunction with User Manuals or further particular rules applicable to the use of EDI in particular trades or sections of commerce. Such particular rules relating to the special meanings of messages used in such trades would normally be found in the relevant User Manuals, together with technical instructions concerning message structure and communications procedures. The IA refers to this important connection with User Manuals.
- 4 The IA is not itself a substitute for any individual contracts, express or implied, between trading partners, such as those for the supply and purchase of goods or services. Such underlying contracts and contractual relationships are assumed to exist, or to be brought into existence, just as they would if the exchange of information between the parties had been by means other than electronic.
- 5 No special clause appears in the IA about attribution of liability for breach of its terms, nor about any limitation of liability. It assumes that, in the event of any damage arising directly from a breach, the liability will "lie where it falls". It was not considered necessary when drafting the IA to seek to limit one party's liability to the detriment of another's. There could, of course, be consequential damage which might flow indirectly from breach of the IA's terms (e.g. breach of confidentiality). It is likely, however, that such damages would arise in tort or from breach of the underlying contract between the parties and any remedy would be sought accordingly, not through the IA.

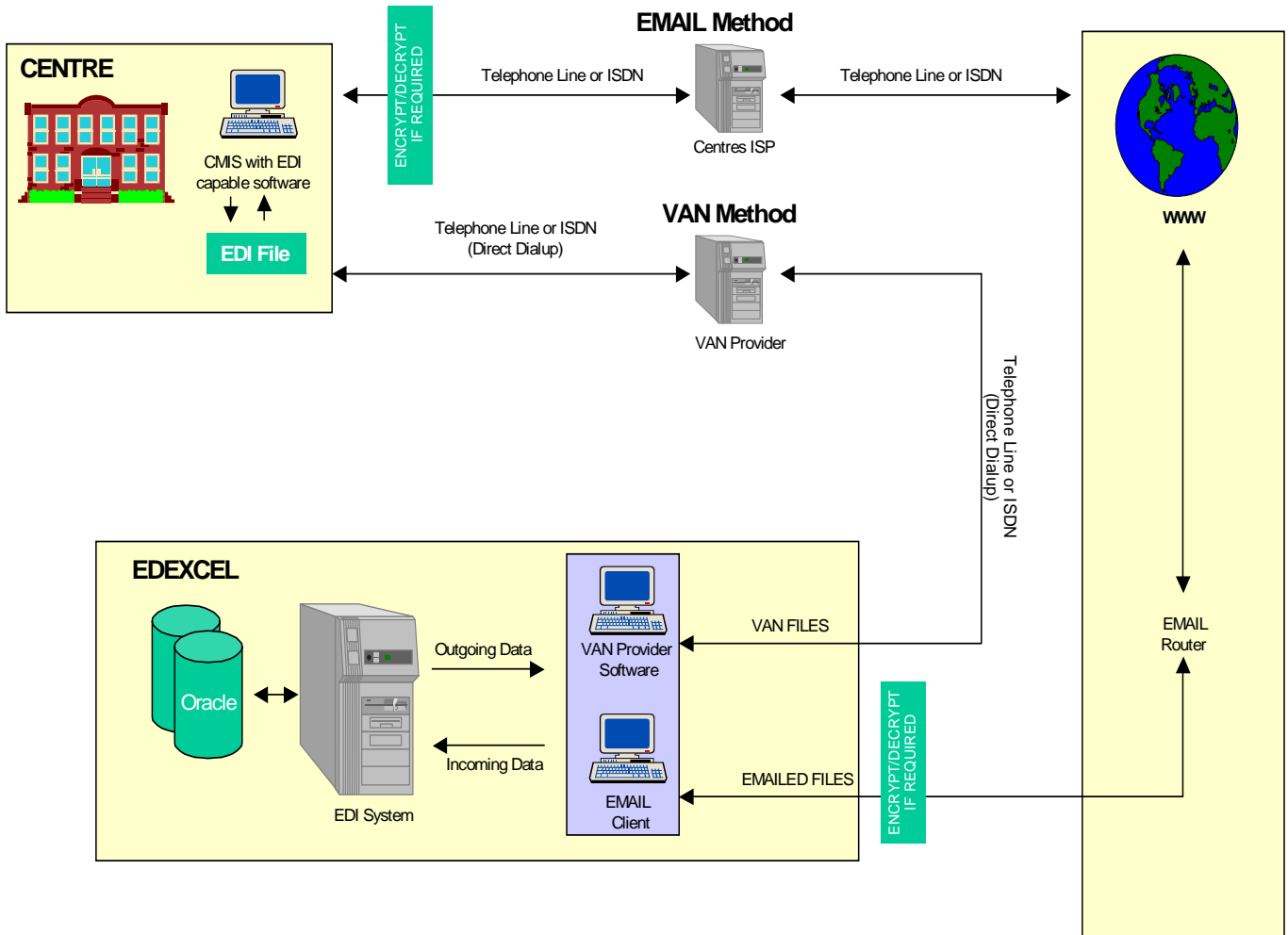
This important distinction is given some emphasis here because it draws attention to an important characteristic of the IA. It should be capable of general application in EDI and it should facilitate the use of EDI but it should most emphatically not disturb or interfere with the normal underlying commercial and contractual relationships of the parties.

- 6 It follows that there would be no need for the IA to compel the parties to make any special arrangements for insurance. It is nevertheless recommended that individual users should check their existing insurance arrangements, advising their brokers or underwriters that they are intending to undertake the practice of EDI.
- 7 Most agreements identify the jurisdiction and applicable law to be used in the event of a dispute arising. The IA provides for English law in the English Courts. The possibility of including an arbitration clause in the IA was considered but it was decided that as arbitration is available anyway, on the voluntary agreement of the parties, it should not be made compulsory. Naturally it is hoped that there will be few disputes but, if there are, recourse to the English Courts might produce some useful case law on the use of EDI.
- 8 The IA is commended for widespread use amongst all parties who wish to engage in EDI in trade, commerce and transport, nationally or internationally. If readers of it wish to copy, distribute or otherwise publish the text they may do so but are requested to ensure that the text of the IA remains complete and without amendment; that due acknowledgement is made that the source of it is the EDI Association of UK; and that any subsequent copying by others is subject to the same provisos.

# EDEXCEL EDI Requirements for CENTRE MIS Providers

## 11 CONFIGURATION AND CONVENTIONS

### 11.1 Transfer Architecture



# EDEXCEL EDI Requirements for CENTRE MIS Providers

## 11.2 Approved File Transfer Methods



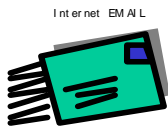
Communicate with EDEXCEL using Redstone (formerly DataNet), a Value Added Network Provider. Information on Redstone is available at [www.redstone.co.uk](http://www.redstone.co.uk)



Communicate with EDEXCEL using AVCO Systems. Information on AVCO is available by going to their website at [www.avco.com](http://www.avco.com)



Communicate with EDEXCEL using Research Machines (RM). For more information on RM go to their website at [www.rm.com](http://www.rm.com)



By using the services of an Internet Service Provider (ISP) EDI files can be emailed as **file attachments** directly to EDEXCEL. EDEXCEL's email address is [yourcentre.reference@eddata.edexcel.org.uk](mailto:yourcentre.reference@eddata.edexcel.org.uk) or [9999@eddata.edexcel.org.uk](mailto:9999@eddata.edexcel.org.uk)

**This email address should ONLY be used for EDI file transfers and not general communication**

## EDEXCEL EDI Requirements for CENTRE MIS Providers

### 11.3 File Naming Conventions

All files for Vocational EDIFACT transmissions should adhere to the following naming conventions:

File Name = <Centre Identifier> . <Data Format>< Data Type>

Name	Description
Centre Identifier	Centre or Sub-centre <digit digit digit digit digit> for a Centre or <digit digit digit digit digit digit letter> for sub-centre
Data Format	Must be E - EDIFACT Format Data
Data Type	Can be either  CD Edexcel Programmes Base Data RA Student Results RD Registration Data RN Registration Numbers acknowledgement ND NVQ/GNVQ/VCE/Key Skills/Adult Basic Skills Qualifications Base Data MA Modern Apprenticeship Base Data GT GNVQ/VCE Key Skills/Adult Basic Skills Timetables Base Data TO GNVQ/VCE Key Skills/Adult Basic Skills Test/Portfolio Ordering RI Request Base Data TR GNVQ/VCE Key Skills/Adult Basic Skills Test/Portfolio Results Acknowledgement RE Student Results Acknowledgement

#### Example:

If your centre number is **99999** and you are sending:

File Type	File Name
Registration Data	99999.ERD
Student Results	99999.ERA
Test/Portfolio Ordering	99999.ETO

## EDEXCEL EDI Requirements for CENTRE MIS Providers

### 11.4 EDEXCEL Electronic Data Interchange.

This document describes the EDIFACT data interchange standard and how EDEXCEL intends to use it for the exchange of EDI data. Once this is complete and accepted, it should form part of the 'interchange agreement' with participating centres.

Edexcel EDIFACT supports the following qualifications:

- BTEC
- NVQ
- GNVQ
- VCE
- Key Skills
- Adult Literacy & Numeracy (ALAN).
- ESOL

**All Edexcel EDIFACT files must follow the naming convention summarised in 11.3**

## EDEXCEL EDI Requirements for CENTRE MIS Providers

### 11.5 Application Level Specification.

Data formats for the electronic exchange of data between EDEXCEL and its centres will conform to **ISO 9735: 1988 (E)**, also known as EDIFACT. This is an application level standard, which means that the data formats are independent of the exchange mechanism used.

### 11.6 Terms used in the EDIFACT specification.

The standard talks of **interchanges**, each of which constitutes a single exchange of data, for example one tape or one communications session.

Each interchange may consist of one or more **functional groups**. A functional group consists of sets of data of the same type. In the EDEXCEL system, functional groups may be registration data or student results.

The sets of data within a functional group are known as **messages** and may be considered to be roughly equivalent to computer files. A functional group may consist of one or more messages which must all be of one type. A message is the smallest unit which may be exchanged.

A message consists of one or more **segments**. A segment may be thought of as equivalent to a record. Each segment consists of a segment tag, followed by the **data elements**, the 'fields', separated by + characters. Data elements may be **simple data elements** or **composite data elements**, which may be further broken down into **component data elements**.

Data elements may be of variable length and may be optional. In order to provide such flexibility, segments are separated by the end of line marker (as defined by the host operating system), data elements by plus signs (+), and the components of composite data elements by colons (:).

The standard defines a number of **service segments** which have a predefined format. The service segments control the structure of the interchange and must accompany the **user data segments**. Service segments use the same syntax conventions as user data segments.

The service segments are: **Service String Advice, Interchange Header and Trailer, Functional Group Header and Trailer and Message Header and Trailer**. The structure of these segments as used by EDEXCEL is given below

## EDEXCEL EDI Requirements for CENTRE MIS Providers

### 12 EDI FILE FORMATS

#### 12.1 EDEXCEL Defined Service Elements

This annex describes the use of those service elements where the standard allows the message designer some leeway.

#### 12.2 Sender ID/Recipient ID

These elements identify the point of origin and destination of an interchange. The standard defines this as a character field of up to 35 characters. For the EDEXCEL EDI system, the existing EDEXCEL centre number will be used. For EDEXCEL itself, the identifier 'EDEX' will be used

#### 12.3 Interchange Control Reference/Functional Group

These fields are available to identify particular instances of interchanges, functional groups and messages. Although it is not envisaged that any major use will be made of these, they could become useful in problem tracing. Centres are free to make use of these fields as they see fit, although it is recommended that they are unique within the centre

#### 12.4 Acknowledgement request

All files received by EDEXCEL will automatically generate an acknowledgement that will be sent back to the Centre using the same transmission method in which the file was received. Centres can optionally request EMAIL only acknowledgements for faster turnarounds.

#### 12.5 Application Sender/Recipient Identifier

This identifies a department within an organisation. The following identifier will be used:

STUDENT SERVICES

## EDEXCEL EDI Requirements for CENTRE MIS Providers

### 12.6 EDI Message Specification

#### 12.6.1 UNB - Interchange Header.

This segment begins and defines the entire exchange of data.

Description	Size	Type	Comments
Segment Tag	3A	M	Must be "UNB"
+			
Syntax Identifier	4A	M	Must Be "UNOA"
+			
Syntax Version	1N	M	Must be 2
+			
Sender Id	6A	M	Edexcel Centre Number Including Sub-centre suffix. This will be EDEX for data sent from EDEXCEL
+			
Recipient Id	6A	M	Edexcel Centre Number including sub-centre suffix. This will be EDEX for data sent to EDEXCEL.
+			
Preparation Date	8N	M	Date of creation of 'file' format - YYYYMMDD
:			
Preparation Time	4N	M	The time the file was created. Format HHMM. May be 0000
+			
Interchange Control Reference	A14	M	Sender's Unique reference number for the Interchange.
+			
Recipient Password		O	Not Used
+			
Application Reference		O	Not Used
+			
Processing Priority		O	Not Used
+			
Acknowledgement Request		O	Not Used
+			
Communications Agreement Id		O	Not Used
+			
Test Indicator	1A	M	1 if the Interchange is a TEST 0 for a LIVE Interchange

#### Example

UNB+UNOA+2+12345+EDEX+20010305:1548+45+++++0

## EDEXCEL EDI Requirements for CENTRE MIS Providers

### 12.6.2 UNZ - Interchange Trailer.

This segment terminates the exchange.

Description	Size	Type	Comments
Segment Tag	3A	M	Must be "UNZ"
+			
Control Count	6N	M	Number of functional groups in the interchange.
+			
Interchange Control Reference	14A	M	Sender's unique reference number for the interchange. This must be the same as the equivalent field in the interchange header.

#### Example

UNZ+1+45

## EDEXCEL EDI Requirements for CENTRE MIS Providers

### 12.6.3 UNG - Functional Group Header.

This segment defines and marks the start of a functional group. The use of UNG allows data for multiple applications to be sent in one interchange although EDEXCEL does not support this.

Description	Size	Type	Comments
Segment Tag	3A	M	Must be "UNG"
+			
Functional Group Identification	6A	M	An Identifier for message type contained within the group. Message types are defined later.
+			
Application Sender Identification	35A	M	The name of the department sending the message. Standard names are to be used for EDEXCEL departments.
+			
Application Recipient Identification	35A	O	The name of the department for whom the message is intended. Standard names are to be used for EDEXCEL departments. These are identified later.
+			
Preparation Date	8N	M	Date of creation of 'file' format - YYYYMMDD
:			
Preparation Time	4N	M	The time the file was created. Format HHMM. May be 0000
+			
Functional Group Reference	A14	M	Sender's Unique reference number for the Interchange.
+			
Controlling Agency	A2	M	Must be BT.
+			
Message Version Number	3N	M	These are identified later and are dependant upon the type of message being sent. This will change with major releases to the message content.
:			
Message Release Number	3N	M	Defined by EDEXCEL and are identified later.
+			
Application Sender Internet EMAIL Address	40A	O	The internet email address of the sender. Used to identify where file receipt acknowledgements are sent.
+			
Application Recipient Internet EMAIL Address	40A	O	The internet email address of the recipient.

#### Example (Student Registrations)

UNG+REGIST+12345+STUDENT SERVICES+20010305:1548+45+BT+4:2+EXAMOFF@COLL.AC.UK+12345@EDIDATA.EDEXCEL.ORG.UK

## EDEXCEL EDI Requirements for CENTRE MIS Providers

### 12.6.4 UNE - Functional Group Trailer.

This segment marks the end of a functional group

Description	Size	Type	Comments
Segment Tag	3A	M	Must be "UNE"
+			
Number of messages in group	6N	M	Number of messages in the functional group.
+			
Functional Group Reference Number	14A	M	Same as the corresponding value in UNG.

#### Example

UNE+1+45

## EDEXCEL EDI Requirements for CENTRE MIS Providers

### 12.6.5 UNH - Message Header.

This segment defines and marks the start of a message.

Description	Size	Type	Comments
Segment Tag	3A	M	Must be "UNH"
+			
Message Reference Number	14A	M	A unique reference for the message.
+			
Message Type	6A	M	The type of message. These are identified later.
:			
Message Version Number	3N	M	These are dependent upon the Message type and are defined later. Will change with major changes to message content.
:			
Message Release Number	3N	M	Will change with Bug fixes etc. There are defined later.
+			
Common Access Reference	35A	O	Not used
+			
Transfer Sequence	2N	M	This is the sequence number of this transmission within a data set.
:			
Transfer State	1A	M	Must be F

#### Example (Student Registrations)

UNH+ET10010+REGIST: 4:1++1:F

## EDEXCEL EDI Requirements for CENTRE MIS Providers

### 12.6.6 UNT - Message Trailer.

This segment marks the end of a message.

Description	Size	Type	Comments
Segment Tag	3A	M	Must be "UNT"
+			
Number of Segments	6N	M	The number of segments in the message
+			
Message Reference Number	14A	M	The messages unique reference number.

#### Example (Student Registrations)

UNT+71+45

## EDEXCEL EDI Requirements for CENTRE MIS Providers

### 12.6.7 EDEXCEL PROGRAMMES/MODULES BASE DATA (BDEDEX)

Message Type	BDEDEX
Description	EDEXCEL Programmes Modules Base Data (including KS/ABS)
Message Version/Release	6.0
Message Sent to	CENTRE
Segments	3
Release Date	February 2008

#### Segment 1 (M) - Program Header

Description	Size	Type	Comments
Segment Tag	4A	M	Must be "EPR1"
+			
Programme No	5A	O	Relates to the BTEC programmes numbers e.g. P1234. Will be blank for individual modules approved.
+			
Modes of Study	20A	O	A full listing is available in Edexcel's Information Manual.
+			
Program Name	150A	O	The name of the program.
+			
Approval Year	4N	O	The academic year the programme is approved until. e.g. 2001
+			
Award Code	2A	M	Identifies the type of Qualification e.g. 01-First Certificate A complete up to date list of Award Codes is available on request.
+			
Qualification Accreditation Number	8A	O	The accredited OCA qualification code.

#### Segment 2 (M) - Programme Combination/Eligibility Requirements

Description	Size	Type	Comments
Segment Tag	4A	M	Must be "EPR2"
+			
Combination Approved	1A	O	Can be A to Z
+			
Minimum Total module Value	6N	O	Will be formatted as 999.99
+			
Minimum Number of Modules	6N	O	Will be formatted as 999.99
+			
BTEC NQF Logic Formula	60A	O	Eligibility requirements BTEC NQF Qualifications

#### Segment 3 (O) - Programme Package Eligibility Requirements (Optional)

Description	Size	Type	Comments
Segment Tag	4A	M	Must be "EPR3"
+			
Package Unit Type	1A	M	Can be K-Key Skills (old style), V-Vocational, L-Life Skills, U-Language Units
+			
Minimum Number of Modules	2N	M	Will be formatted as 99.
+			
BTEC NQF Logic Formula	60A	O	Eligibility requirements BTEC NQF Qualifications

## EDEXCEL EDI Requirements for CENTRE MIS Providers

Message Type	BDEDEX
Description	EDEXCEL Programmes Modules Base Data (including KS/ABS)
Message Version/Release	6.0
Message Sent to	CENTRE
Segments	3
Release Date	February 2008

### Segment 4 (O) - Programme Package Class Eligibility Requirements (Optional)

Description	Size	Type	Comments
Segment Tag	4A	M	Must be "EPR4"
+			
Package Classification Type	1A	M	A-Application of Number, C-Communication, I-Info. Technology
+			
Minimum No. of Modules	2N	M	Will be formatted as 99.

### Segment 5 (M) - Module/Package Details

Description	Size	Type	Comments
Segment Tag	4A	M	Must be "EPR5"
+			
Module Code/Unit Number	8A	M	Can be module or NVQ/GNVQ/VCE unit
+			
BTEC/NVQ/GNVQ/VCE	1A	M	Can be B_BTEC, N-NVQ, G_GNVQ/VCE BTEC includes Key Skills, Adult Basic Skills and ESOL qualifications
+			
Module Title	150A	M	The module title
+			
Module Status	2A	O	The status of the module
+			
Module /Credit Value	6N	M	The module worth/credit weight. Will be formatted as 999.99.
+			
Module/Credit Level	4A	M	The level of the module.
+			
Module Size	3N	O	The size of the module in hours. Format 999.
+			
Module/Credit Type	1A	O	
+			
Approval Year	4N	O	Will be formatted as YYYY.
+			
QCA Unit Code	8A	O	The accredited QCA unit code.

### Example

```

EPR1+M7676++BUSINESS+2008+94+10056920
EPR2+A++
EPR5+20225Y+B+EXPLORING BUSINESS PURPOSES+C+006.00+2+060.00+++L1034534
EPR5+20226Y+B+DEVELOPING CUSTOMER RELATIONS+O+006.00+2+060.00+++R1034535
EPR5+20227Y+B+INVESTIGATING FINANCIAL CONTROL+O+006.00+2+060.00+++Y1034536
EPR5+20228Y+B+BUSINESS COMMUNICATION+O+006.00+2+060.00+++D1034537
EPR5+20229Y+B+PEOPLE IN ORGANISATIONS+O+006.00+2+060.00+++H1034538
EPR5+20230Y+B+PROVIDING BUSINESS & ADMINISTRATION SUPPORT+O+006.00+2+060.00+++K10344539
EPR5+20231Y+B+PERSONAL SELLING+O+006.00+2+060.00+++D1034540
EPR5+20232Y+B+DOING BUSINESS ONLINE+O+006.00+2+060.00+++H1034541
EPR5+20233Y+B+EXPLORING BUSINESS ENTERPRISE+O+006.00+2+060.00+++K1034542
EPR5+20234Y+B+STARTING A SMALL BUSINESS+O+006.00+3+060.00+++M1034543
    
```

## EDEXCEL EDI Requirements for CENTRE MIS Providers

### 12.6.8 NVQ/GNVQ/VCE BASE DATA (BDNCVQ)

Message Type	BDNCVQ
Description	NVQ/GNVQ/VCE Base Data
Message Version/Release	6.0
Message Sent to	CENTRE
Segments	6
Release Date	February 2008

#### Segment 1 - NVQ/GNVQ/VCE Header

Description	Size	Type	Comments
Segment Tag	4A	M	Must be "NCV1"
+			
Qualification Code	8A	O	Identifier supplied by Edexcel for the qualification. Blank indicates that the units in Segment 4 have been approved as free-standing/optional units.
+			
Level	1A	O	Level of the qualification (1-5). Mandatory for qualifications.
+			
Qualification Title	150A	O	The title of the qualification
+			
Approval Year	4A	O	Last year of approval. Will be formatted as YYYY.
+			
Certificate End Date	8N	O	Will be formatted as YYYYMMDD.
+			
Qualification Type	2A	O	NV = NVQ GF = GNVQ FULL GS = GNVQ SINGLE GP = GNVQ PART 1 VD = VCE DOUBLE VA = AS VCE VC = VCE
+			
List of Valid Grades	40A	O	A list of valid overall grades for the GNVQ/VCE. Separated by a space.
+			
Qualification Accreditation Number	8A	O	The accredited OCA qualification code.

#### Segment 2 - NVQ/GNVQ/VCE Version

Description	Size	Type	Comments
Segment Tag	4A	M	Must be "NCV2"
+			
Version Number	4N	O	Mandatory for Qualifications
+			
NVQ/GNVQ/VCE Logic Formula	60A	O	For NVQ & GNVQ/VCE Qualifications

#### Segment 3 - Evidence Routes (Optional Segment, applies to NVQs only)

Description	Size	Type	Comments
Segment Tag	4A	M	Must be "NCV3"
+			
Evidence Route Code	8A	M	Evidence Route Code
+			
Evidence Route Description	150A	M	Evidence Route Description

Continued.....

## EDEXCEL EDI Requirements for CENTRE MIS Providers

Message Type	BDNCVQ
Description	NVQ/GNVQ/VCE Base Data
Message Version/Release	6.0
Message Sent to	CENTRE
Segments	6
Release Date	February 2008

### Segment 4 - Group Eligibility

Description	Size	Type	Comments
Segment Tag	4A	M	Must be "NCV4"
+			
Group Type	1A	O	Indicates the grouping of the units. NVQs - C-Core, O-Optional, F-Free Standing GNVQ/VCE - K-Key Skill, M-Mandatory, O-Optional, A-Additional
+			
NVQ/GNVQ Sub Type	1A	O	Can be A,B,C,D,E....etc
+			
Required Units	4N	O	The eligibility requirements for the group.

### Segment 5 - Unit Details (1 per NVQ/GNVQ/VCE Unit)

Description	Size	Type	Comments
Segment Tag	4A	M	Must be "NCV5"
+			
Unit id	8A	M	Identifier supplied by Edexcel for the unit. Up to 8 characters.
+			
Unit Title	150A	M	Short Version of the Unit Title.
+			
Unit Level	1N	O	GNVQ/VCE Units only.
+			
Unit Type	1A	O	N = NVQ, G-GNVQ/VCE , K = Key Skills
+			
Unit Essential	1A	O	'Y' Indicates that the unit must be completed as part of the Optional Group.
+			
QCA Unit Code	8A	O	The accredited QCA unit code.

### Segment 6 - Unit Evidence Routes (Optional Segment, applies to NVQ Units only)

Description	Size	Type	Comments
Segment Tag	4A	M	Must be "NCV6"
+			
Evidence Route Code	8A	M	Evidence Route Code
+			
Evidence Route Description	150A	M	Evidence Route Description

### Example

NCV1+Q5000151+3+HEALTH AND SOCIAL CARE (ADULTS)+2008+20110131+NV++10047967  
 NCV2+1+4(4A) and 4(4B) and 0(0C)  
 NCV4+C+A+4  
 NCV5+U5001412+PROMOTE EFFECTIVE COMMUNICATION FOR AND ABOUT INDIVIDUALS++N++T1028713  
 NCV5+U5001413+PROMTE, MONITOR & MAINTAIN HEALTH, SAFETY, SECURITY AT WK++N++A1028714  
 NCV5+U5001414+REFLECT ON AND DEVELOP YOUR PRACTICE++N++F1028715

## EDEXCEL EDI Requirements for CENTRE MIS Providers

### 12.6.9 MODERN APPRENTICESHIP SCHEME BASE DATA (BDMASD)

Message Type	BDMASD
Description	Modern Apprenticeship Scheme Definition Base Data
Message Version/Release	6.0
Message Sent to	CENTRE
Segments	3
Release Date	February 2008

#### Segment 1 - Scheme Header

Description	Size	Type	Comments
Segment Tag	4A	M	Must be "SCH1"
+			
Scheme Code	8A	M	The Scheme Code used to register students on.
+			
Scheme Version	3N	M	The version of the scheme. Student will always be registered on the latest version of the scheme.
+			
Scheme Name	150A	M	The title of the scheme
+			
Approved From	8N	M	Scheme approved from. Supplied as YYYYMMDD
+			
Approved To	8N	M	Scheme approved to. Supplied as YYYYMMDD
+			
Qualification Accreditation Number	8A	O	The accredited QCA qualification code.

#### Segment 2 - Scheme Programmes (One or more per scheme)

Description	Size	Type	Comments
Segment Tag	4A	M	Must be "SCH2"
+			
Sequence No	6N	M	The ordering of the programmes in the scheme
+			
Programme type	1A	M	The type of programme contained within the scheme. 'B' Edexcel Programme, 'N' NVQ, G' GNVQ/VCE
+			
Programme No/NVQ/GNVQ/VCE Code	8A	M	The programme Number EDEXCEL programme (incl. KS/ABS) - up to 5 characters NVQ/GNVQ/VCE Qualification - up to 8 Characters first char Q or G
+			
NCVQ Version/Combination	3A	M	The version of the NVQ/GNVQ/VCE (numeric) or the Combination of the Edexcel Programme (A-Z)
+			
Qualification Accreditation Number	8A	O	The accredited QCA qualification code.

Continued.....

## EDEXCEL EDI Requirements for CENTRE MIS Providers

Message Type	BDMASD
Description	Modern Apprenticeship Scheme Definition Base Data (Continued)
Message Version/Release	6.0
Message Sent to	CENTRE
Segments	3
Release Date	February 2008

### Segment 3 - Scheme Units (One or more per scheme)

Description	Size	Type	Comments
Segment Tag	4A	M	Must be "SCH3"
+			
Sequence No	6N	M	The ordering of the programmes in the scheme
+			
Unit Type	1A	M	The type of unit contained within the scheme. 'B' Edexcel Programme, 'N' NVQ, G' GNVQ/VCE
+			
Unit Code	8A	M	The programme Number EDEXCEL programme - up to 5 characters GNVQ/VCE Qualification - 8 Characters first char always U
+			
QCA Unit Code	8A	O	The accredited QCA unit code.

### Example

SCH1+MAS00798+1+APPRENTICESHIP IN HEALTH AND SOCIAL CARE+20061212+20080131+12345678  
 SCH2+1+N+Q5000150+1+10047955  
 SCH2+2+B+KSQ00+A+  
 SCH2+3+B+K4366+A+10060649

## EDEXCEL EDI Requirements for CENTRE MIS Providers

### 12.6.10 STUDENT REGISTRATION DATA (REGIST)

Message Type	REGIST
Description	Student Registration Data
Message Version/Release	6.0
Message Sent to	EDEXCEL
Segments	3
Release Date	February 2008

#### Segment 1 - Registration Header (One per programme or set of I-type students)

Description	Size	Type	Comments
Segment Tag	4A	M	Must be "REG1"
+			
Type of Registration	1A	M	I = Individual Module, R = Regular, S = Special
+			
Centre Number	6A	M	Normally 5 digits - a suffix of A-Z where a sub-centre is approved.
+			
Programme/ Scheme or Syllabus Number	8A	O	Use base data to validate. Mandatory for R or S type registrations. EDEXCEL programme (incl. KS/ABS) - one letter + up to 4 digits GNVQ/VCE/NVQ Qualification - G or Q +up to 7 digits EDEXCEL MA Scheme = MAS + 5 digits / Syllabus - 4 digits
+			
Date of Student Enrolment	8N	M	Format YYYYMMDD
+			
Form/Order Number	12A	M	Centres Internal Reference Number.
+			
TEC Code	4A	O	Training and Enterprise Council code used for Funding
+			
Tests Required	1A	O	Enter N if No tests are required for the next series.
+			
Test Series Date	6N	O	When ordering GNVQ/VCE/KS/ABS tests enter the test series that the units should be entered for. Format YYYYMM.
+			
KS/ABS Cohort Reference	8A	O	KS/ABS Entries only. Used to group candidates.

#### Segment 2 - Registration Detail (One per student)

Description	Size	Type	Comments
Segment Tag	4A	M	Must be "REG2"
+			
Centre's Reference	10A	M	Should be unique within an EDI transfer.
+			
Forenames	20A	M	The students forenames
+			
Surname	30A	M	The students surname
+			
Sex/Gender	1A	M	Must be either M-Male or F-Female
+			
Date Of Birth	8N	M	Format YYYYMMDD
+			
Planned Completion Date	8N	M	Format YYYYMMDD.
+			
Study Mode	1A	O	'A' - 'Z'. Codes are available in the Edexcel's Information Manual.
+			
Overseas Student	1A	O	Must be Y where the student is studying overseas.
+			
Combination	1A	O	Only applicable to programmes with combinations.
+			
Franchise Number	6A	O	Institution where the programme is franchised. Normally 5 digits. Can have a suffix of A-Z where a sub-centre is approved.
+			
Unique Learner Number	10A	O	The learners unique number issued by the MIAP Learner Registration Service

## EDEXCEL EDI Requirements for CENTRE MIS Providers

Message Type	REGIST
Description	Student Registration Data (Continued)
Message Version/Release	6.0
Message Sent to	EDEXCEL
Segments	3
Release Date	February 2008

### Segment 3 - Registration Module Detail (One or more per student)

Description	Size	Type	Comments
Segment Tag	4A	M	Must be "REG3"
+			
Unit No or NVQ Evidence Route	8A	M	EDEXCEL/NVQ/GNVQ/VCE or NVQ Evidence Route Code. Essential for I type registrations. Can be used to order tests for GNVQ/VCE/KS/ABS Qualifications

### Example

```
REG1+I+12345A++20080901+M12344++
REG2+1263+FRED+BLOGGS+M+19740926+19990707+E++++1234567890
REG3+U1021340
REG3+U1021341
REG1++12345B+KSQ00+20000912+M12345++Y+200103+KSQ1
REG2+1265+JANE+DOE+F+19710123+20020901+A++++1234567891
REG3+KA2T
REG3+K23T
```

**IMPORTANT: STUDENTS ARE LOADED INTO EDEXCEL'S COMPUTER SYSTEM IN THE ORDER IN WHICH THEY ARE RECEIVED.**

## EDEXCEL EDI Requirements for CENTRE MIS Providers

### 12.6.11 REGISTRATION NUMBER ACKNOWLEDGEMENT (REGACK)

Message Type	REGACK
Description	Student Registration Numbers Acknowledgement
Message Version	6.0
Message Sent to	CENTRE
Segments	1
Release Date	February 2008

Segment 1 - Registration Header (One per programmer or set of I-type students)

Description	Size	Type	Comments
Segment Tag	4A	M	Must be "ACK1"
+			
Centre's Reference	10A	M	The centres student identifier.
+			
Edexcel Registration Number	7A	M	Edexcel's student identifier. Can be a scheme registration number.
+			
Forenames	20A	O	Forenames
+			
Surname	30A	O	Surname
+			
Programme No	8A	O	Contains the programme no the student is registered on. This will be blank for Individual unit students
+			
Key Skills Cohort Reference	8A	O	Key Skills Entries only. Used to group candidates together
+			
Unique Learner Number	10	O	The learners unique number issued by MIAP the Learner Registration Service

#### Example

ACK1+1263+S220151+FRED+BLOGGS+++1234567890  
 ACK1+1265+S220153+JANE+DOE+KSQ00+KSQ1+1234567891

## EDEXCEL EDI Requirements for CENTRE MIS Providers

### 12.6.12 STUDENT RESULTS (RESULT)

Message Type	RESULT
Description	Student Results
Message Version/Release	6.0
Message Sent to	EDEXCEL
Segments	2
Release Date	February 2008

**IMPORTANT: THIS EDI FORMAT MUST NOT BE USED FOR GNVQ/VCE/KS/ABS RESULTS REPORTING.**

#### Segment 1 - Student Header (One per student)

Description	Size	Type	Comments
Segment Tag	4A	M	Must be "RES1"
+			
Student Registration Number	7A	M	Edexcel's Student Identifier
+			
Centre No	6A	M	Normally 5 digits - can have suffix of A-Z where a sub-centre is approved
+			
Programme/Qualification/ Scheme Number or Syllabus Code	8A	O	Must be a valid programme, scheme or syllabus for the centre. Use base data to validate. Required for R or S type registrations. EDEXCEL programme - up to 5 characters NVQ Qualification - Up to 8 characters
+			
Combination	1A	O	A-Z. Required if changing combination.
+			
Award Application	1A	O	'Y' if applying for an award.
+			
Award Date	6A	O	Must be formatted as YYYYMM. May only be entered if fallback or award application is 'Y'
+			
Fallback	1A	O	'Y' for EDEXCEL Certificate of Unit Achievement or Fallback Certificate of Unit Credit for NVQ Students
+			
Overall Grade	1A	O	Students Overall Grade
+			
Withdraw Student	1A	O	Enter 'Y' if the student has withdrawn from the programme.
+			
NVQ/Scheme ID	8A	O	Required if changed since registration.
+			
Unique Learner Number	10	O	The learners unique number issued by the MIAP Learner Registration Service

#### Segment 2- Module/Unit Grades (As many per student as required)

Description	Size	Type	Comments
Segment Tag	4A	M	Must be "RES2"
+			
Module/Unit Code Language Code or Evidence Route Code	8A	M	Edexcel Module - Max 6 characters NVQ Unit - Up to 8 characters
+			
Module/Unit Grade	1A	M	Please contact Edexcel for an up to date list of valid grades Valid grades at time of document distribution are: P = Pass, M = Merit, D = Distinction T = Transfer Credit, U = Unclassified

Continued.....

Message Type	RESULT
--------------	--------

## EDEXCEL EDI Requirements for CENTRE MIS Providers

Description	Student Results
Message Version/Release	6.0
Message Sent to	EDEXCEL
Segments	2
Release Date	February 2008

### Example

RES1+X478215+20111B+H8466++++Y++++1234567893  
RES2+23056W+P  
RES2+23058W+P  
RES2+23059W+P

## EDEXCEL EDI Requirements for CENTRE MIS Providers

### 12.6.13 RESULTS ACKNOWLEDGEMENT (RESACK)

Message Type	RESACK
Description	Results Acknowledgement
Message Version/Release	6.0
Message Sent to	CENTRE
Segments	2
Release Date	February 2008

#### Segment 1 - Student Header (One per student) - MANDATORY

Description	Size	Type	Comments
Segment Tag	4A	M	Must be "RAC1"
+			
Centre No	6A	M	Normally 5 digits - can have suffix of A-Z where a sub-centre is approved
+			
Programme/Qualification/ Scheme Number	8A	O	For students who are registered on a programme. Will be blank for student registered on individual units.
+			
Programme Combination/Version	2A	O	For programmes only. Will contain A-Z for programmes (incl. KS/ABS) or 1-99 for NVQ/GNVQ/VCE qualifications, blank for students registered on individual units.
+			
EDEXCEL Registration Number	7A	M	Edexcel's Student Identifier
+			
Evidence Route	8A	O	The evidence route the student is registered on (NVQ programmes only)
+			
Centre Student Identifier	10A	M	The Centres student identifier
+			
Forenames	20A	M	The students forenames
+			
Surname	30A	M	The students surname
+			
Award Claimed Date	8N	O	Format YYYYMMDD. Award date printed on certificate.
+			
Award Issued Date	8N	O	Format YYYYMMDD
+			
Overall Grade	2A	O	The overall qualification grade.
+			
Certificate No	10A	O	The Certificate number generated by EDEXCEL
+			
CUC/NOP Issued Date	8N	O	Format YYYYMMDD
+			
Key Skills Cohort Ref.	8A	O	Key Skills Entries only. Used to group candidates together
+			
Unique Learner Number	10	O	The learners unique number issued by the MIAP Learner Registration Service
+			
Qualification Accreditation Number	8A	O	The accredited QCA qualification code.

Overall Grade: For BTEC 3 character grades the following 2 character coding is used:

DDD	=	D1
DDM	=	D2
DMM	=	D3
MMM	=	M1
MMP	=	M2
MPP	=	M3
PPP	=	P1
U	=	U

(UUU is not a code used for describing overall grades)

## EDEXCEL EDI Requirements for CENTRE MIS Providers

Message Type	RESACK
Description	Results Acknowledgement (Continued)
Message Version/Release	6.0
Message Sent to	CENTRE
Segments	2
Release Date	February 2008

### Segment 2- Module/Unit Grades (As many per student as required) - OPTIONAL

Description	Size	Type	Comments
Segment Tag	4A	M	Must be "RAC2"
+			
Module/Unit Code or Language Code	8A	M	Edexcel Module - Max 6 characters NVQ/GNVQ/VCE/BTEC/KS/ABS Unit - Up to 8 characters
+			
Module/Unit Grade	2A	M	The unit grade.
+			
Evidence Route	8A	O	The unit evidence route code.
+			
Score (UMS)	6N	O	For GNVQ/VCE Qualifications only. Contains the UMS.
+			
QCA Unit Code	8A	O	The accredited QCA unit code.

### Example

RAC1+12345+L2369+A+Y626570++280668+EDEXCEL+LEARNER+20070811+20070701+M+38792+20070811++1234567893+10056920  
 RAC2+20225Y+P+++L1034534  
 RAC2+20226Y+P+++Y1034536  
 RAC2+20227Y+P+++R1034535

## EDEXCEL EDI Requirements for CENTRE MIS Providers

### 12.6.14 TIMETABLES (TIMETB)

Message Type	TIMETB (previously called GNVQTT)
Description	GNVQ/VCE/KS/ABS Timetables (Including Testable and Portfolio Units)
Message Version/Release	6.0
Message Sent to	CENTRE
Segments	1
Release Date	February 2008

#### Segment 1 - GNVQ/VCE/KS/ABS Timetable - GTT

Description	Size	Type	Comments
Segment Tag	4A	M	Must be "GTT1"
+			
Unit Number	8A	M	GNVQ/VCE/KS/ABS Unit Number.
+			
Series	6N	M	Format YYYYMM e.g. 200206
+			
Test Date	8N	O	For Testable Units only. The date on which the test will take place. Format YYYYMMDD
+			
Test Time	4N	O	For Testable units only. The time at which the test is scheduled. Format HHMM e.g. 1430
+			
Duration	4N	O	The duration of the test. Format HHMM.
+			
Assessment Type	2A	M	The type of unit e.g. MC - Multiple-Choice, SA - Short Answer, P-Portfolio, ET-Exemption (Test), EP-Exemption (Portfolio)
+			
Order Deadline	8A	M	The latest date on which an order can be placed. Format YYYYMMDD
+			
Appeal Deadline	8A	M	The latest date on which an appeal can be made. Format YYYYMMDD
+			
Qualifying Text	80A	O	Additional Informational Text

#### Example

GTT1+A101T+200106+20010521+0900+0130+SA+20010321+20010920+

## EDEXCEL EDI Requirements for CENTRE MIS Providers

### 12.6.15 TEST/PORTFOLIO ORDERING (ORDERS)

Message Type	ORDERS (previously called GNVQTO)
Description	GNVQ/VCE/KS/ABS Test /Portfolio Ordering
Message Version/Release	6.0
Message Sent to	EDEXCEL
Segments	1
Release Date	February 2008

Segment 1 -Test and Portfolio Ordering - GTO - (One per Unit Assessment type)

Description	Size	Type	Comments
Segment Tag	4A	M	Must be "GTO1"
+			
Edexcel Registration Number	7A	M	Edexcel's Student Identifier
+			
Unit Number	8A	O	GNVQ/VCE/ABS/KS Unit Number. Can only be blank when a student is either Claiming or Withdrawing.
+			
Series	6N	M	The series in which the testable or portfolio unit is going to be taken. Format YYYYMM.
+			
Award Application/ Withdraw Student	1A	O	Enter 'C' to claim the award or 'W' to withdraw the student.
+			
Unique Learner Number	10A	O	The learners unique number issued by the MIAP Learner Registration Service

#### Example

GTO1+W042462+KC2T +200106+C+1234567895

## EDEXCEL EDI Requirements for CENTRE MIS Providers

### 12.6.16 TEST/PORTFOLIO RESULTS ACKNOWLEDGEMENT (TSTRES)

Message Type	TSTRES
Description	GNVQ/VCE/KS/ABS Test/Portfolio Results Acknowledgement
Message Version/Release	6.0
Message Sent to	CENTRE
Segments	2
Release Date	February 2008

#### Segment 1 - Student

Description	Size	Type	Comments
Segment Tag	4A	M	Must be "TST1"
+			
Series	6N	M	Format YYYYMM
Centre No	6A	M	The Edexcel centre number
+			
GNVQ/VCE/KS/ABS Qualification Code	8A	O	Contains the GNVQ/VCE/KS/ABS Qualification Code
+			
Edexcel Registration Number	7A	M	Edexcel's Student Identifier
+			
Centre Student Identifier	10A	M	The Centres student identifier
+			
Forenames	20A	M	The students forenames
+			
Surname	30A	M	The students surname
+			
Overall Grade	2A	O	If the student has completed the award this field will contain their overall grade
+			
Unique Learner Number	10A	O	The learners unique number issued by the MIAP Learner Registration Service
+			
Qualification Accreditation Number	8A	O	The accredited QCA qualification code.

#### Segment 2 - Student Units (One or more per student)

Description	Size	Type	Comments
Segment Tag	4A	M	Must be "TST2"
+			
Unit No	8A	M	Contains the GNVQ/VCE/KS/ABS unit no
+			
Unit Group	1A	M	C - Unit taken in Current test series (see Series segment 1) O -Unit taken on Other test series
+			
Unit Grade	2A	M	The unit grade
+			
Score (UMS)	6N	O	The unit score (UMS)
+			
Results Status	1A	O	Can be 'X' - Absent , 'O' - Incomplete
+			
QCA Unit Code	8A	O	The accredited QCA unit code.

#### Example

TST1+200101+12345+KSQ00+S042462+Z123+BROWN+SMITH+1234567896  
TST2+KC1T+C+M+203+1000287X

## EDEXCEL EDI Requirements for CENTRE MIS Providers

### REQUEST INFORMATION (REQINF)

Message Type	REQINF
Description	Request Information (For Vocational and Academic Qualifications)
Message Version/Release	6.0
Message Sent to	EDEXCEL
Segments	1
Release Date	February 2008

#### Segment 1 - Request Information

Description	Size	Type	Comments
Segment Tag	4A	M	Must be "REQ1"
+			
Request Type	3A	M	The type of request. VBD-Vocational Base Data GTT- Timetables ABD-Academic Base Data
+			
Request Sub-type	2A	M	For ABD must be A -For Syllabus, Option, Link and Component For VBD must be either N-NVQ/GNVQ/VCE Qualifications and their modules S-Modern Apprenticeship Schemes B-Request E,N and S EI-Edexcel Programmes/with all units approved (including KS/ABS) NI-NVQ/GNVQ/VCE Qualifications/with all units approved SI-Modern Apprenticeship Schemes/with individual units BI -Request EI ,NI and SI For GTT must be 'NA'
+			
Centre No	6N	M	The Edexcel centre number.
+			
Approved To/Year	4N	M	For VBD - Qualifications/programmes approved to YYYY For ABD - The Year For GTT - The Academic Year e.g. 2000 for 2000/2001 academic year
+			
Series	2N	O	For ABD only
+			
Programme/Qualification/ Scheme Identifier	8N	O	For VBD only e.g. GC103, E1234 , ALL ALL means all approved Qualifications/Programmes and modules
+			
Preferred Transmission Type	1A	M	How the request should be transferred to the Centre once generated by EDEXCEL.  Valid Values are  A - AVCO D - Redstone R - RM (Research Machines) E - EMAIL
+			
Email Address	40A	O	Mandatory when Preferred Transmission Type is E (EMAIL).

## EDEXCEL EDI Requirements for CENTRE MIS Providers

Message Type	REQINF (Previously called REQ1)
Description	Request Information (For Vocational and Academic Qualifications) Continued
Message Version/Release	6.0
Message Sent to	EDEXCEL
Segments	1
Release Date	February 2008

### **Example (Vocational Base Data Request)**

REQ1+VBD+BI+12345+2001++ALL+E+FREDBLOGGS@COLLEGE.AC.UK

REQ1+VBD+N+12345+2000++G1012345+D+

### **Example (Academic Base Data Request)**

REQ1+ABD+A+12345+1998+11+ALL+B+

## EDEXCEL EDI Requirements for CENTRE MIS Providers

### 12.6.18 GENERAL COMMUNICATION (GENCOM)

Message Type	GENCOM
Description	General Communication
Message Version/Release	6.0
Message Sent to	CENTRES
Segments	1
Release Date	February 2008

#### Segment 1 - Text

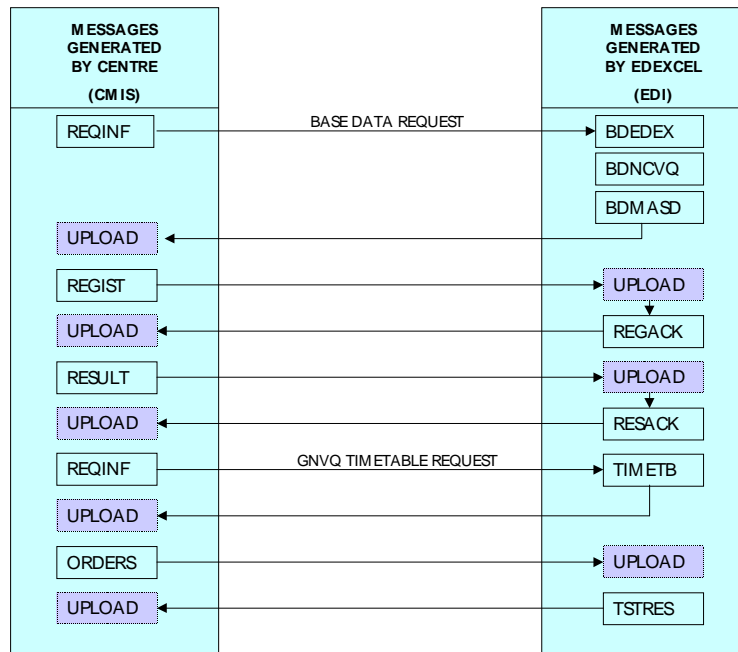
Description	Size	Type	Comments
Segment Tag	4A	M	Must be "GCF1"
+			
Text Sequence No	4N	M	The order of the text lines in the message. Will be left padded with Zeros.
+			
Freeform Text	132A	M	Freely formatted Text

#### Example

GEC1+0001+MESSAGE FROM THE EDEXCEL FOUNDATION  
GEC1+0002+File 99999.erd was received by EDEXCEL on 12/11/1999 at 13:00PM.  
GEC1+0003+This file contained 20 student registrations. A confirmation message will be  
GEC1+0004+sent to you when the students have been registered.  
GEC1+0005+Should you have any questions about EDEXCEL EDI please call 0171 393 4444 and ask for the EDI Section.

## EDEXCEL EDI Requirements for CENTRE MIS Providers

### 13 MESSAGE TRANSMISSION DIRECTIONS



### 14 CENTRE MIS - SUGGESTED MINIMUM FUNCTIONALITY

A number of functions have been identified as beneficial to the process of administration within the centre. The list below is by no means a complete list of CENTRE MIS requirements but reflects the minimum functionality identified.

- Reports should be provided to allow quality checking of entered data. These may be required by course tutors to check on grading for example.
- Reports should be available to list base data information from the base data provided by EDEXCEL.
- The CENTRE MIS must allow repeated extraction of student grade information (two year students will report interim grades after only one year). Module grades should, however, be reported once only, and not re-reported unless the grade is changed.
- It is important that data integrity be maintained between the centre database and the EDEXCEL database. Certain changes to student details are notified to EDEXCEL via Edexcel Online (e.g. course transfers and student name changes). The CENTRE MIS must allow the user to make local changes.

## EDEXCEL EDI Requirements for CENTRE MIS Providers

### 15 DATA TRANSFER AUDIT CHECKS

These are the minimum checks advisable on receipt of an EDIFACT file. In addition, it is recommended that a log is kept of all EDIFACT transmissions.

Error	Action
Number of record does not match number in UNT	Abort
Invalid header	Abort
Missing UNB, UNG, UNH, UNT, UNE, UNZ	Abort
Empty file	Abort
File header matches previous file header - duplicate files	Abort