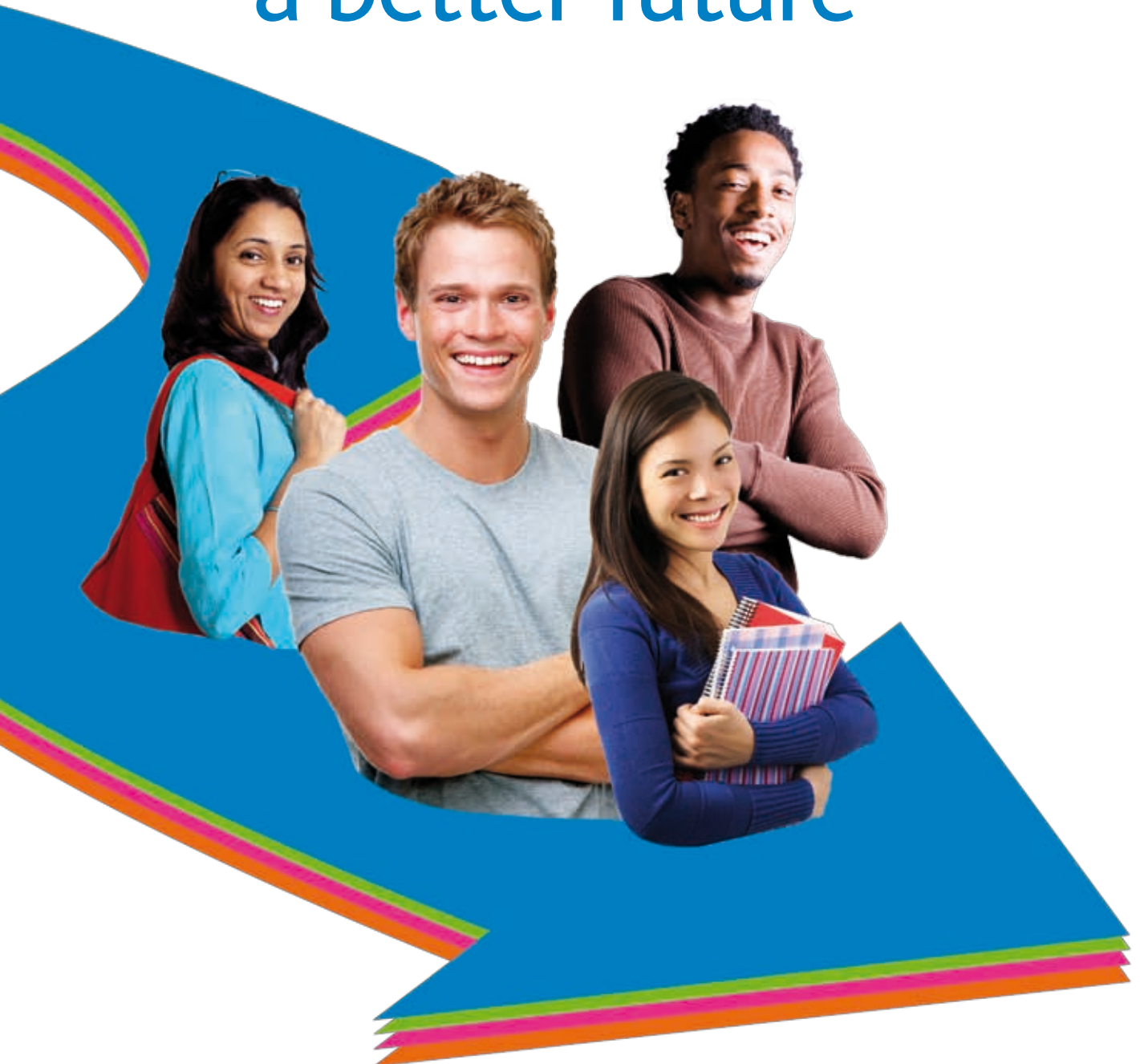


# Directing you towards a better future



Edexcel's Recognition  
and Progression Pathways

# Getting you on the right track

## At Edexcel, your success is at the heart of everything we do.

In order to be successful, you need to make sure that your qualifications are accepted, recognised and valued. That's why we make sure that Edexcel qualifications have recognition and progression pathways.

**Recognition** means how your qualification is rated and accepted by the people who matter - universities and employers.

**Progression Pathways** means what you can do with your qualification once you have achieved it – whether you want to continue with your education or get a job.

Without these, it can be tricky to get a place at university or start your career. But with recognition and progression pathways, you can start to realise your ambitions.

Edexcel qualifications offer excellent opportunities across the globe. In fact, we have specifically designed our qualifications to enable you to study or work wherever you want in the world. They set an international standard and as such are welcomed by some of the top multinational corporations and world-class universities.

We have the widest range of academic and vocational qualifications on offer to international students. In fact, we are unique because our qualifications are structured to give you the choice of progressing through an academic or vocational route or a mix of both. This allows you to tailor your education and career pathway to your potential and your aspirations.

Edexcel's recognition and progression pathways give you choice, flexibility and international mobility.

### Contents

Getting you on the right track	3
Your passport to a global career	4
What makes us right for you?	5
Edexcel qualifications: a guide	6
Where can Edexcel qualifications take you?	9
<b>The Americas</b>	<b>10</b>
Asia	10
Australasia	11
Europe	12
<b>The Middle East and Africa</b>	<b>13</b>
United Kingdom	14
Subject specific degrees	15
Entry to Year 2 (of a 3 year degree)	21
Entry to Year 3 (of a 3 year degree)	22
MBA progression	28
Professional bodies	28
Your next step in the right direction	31

# ➔ Your passport to a global career

Edexcel's qualifications can help you to realise your goals at home and abroad. Do you want to study in the UK, the US or Australia? Set up a company in your home country? Have a fantastic career in a multinational organisation? Whatever your dreams, make them come true with an Edexcel qualification.

## When you study Edexcel's qualifications, you can:

- Further your studies: some of the world's top universities, including the Universities of Oxford and Cambridge, recognise Edexcel's academic qualifications
- Develop a great career: Edexcel qualifications are developed in close consultation with industry, giving employers confidence that your knowledge is up-to-date and your skills (including those all-important employability skills) are relevant
- Prove your worth: Edexcel qualifications demonstrate that you have achieved internationally set standards in skills, knowledge and behaviours
- Study and work across the world, whatever your level: colleges, universities and employers around the world welcome applications from candidates with Edexcel qualifications

Millions of international students have benefited from the prospects that Edexcel's qualifications offer. Now grab your chance to join them!

“ I chose to study BTEC National Diploma (ND) in Business because it is recognised worldwide. Also, the structure of BTEC allows students to complete assessment-based coursework, which provides the opportunity to experiment and cover a subject more thoroughly. Thanks to the BTEC ND, I was offered a place at Robert Gordon University in Scotland and I'm one step closer to reaching my ambition of becoming a managing director. ”

Adeel Qurashi, BTEC ND in Business,  
ROC Van Amsterdam, The Netherlands

# ➔ What makes us right for you?

Edexcel is one of the world's leading awarding organisations. From our beginnings as part of the University of London at the end of the 19th century, we've evolved into one of the most modern and dynamic qualifications providers around today. In fact, we're now part of Pearson, the world's largest education company, which enables you to access our first-class resources.

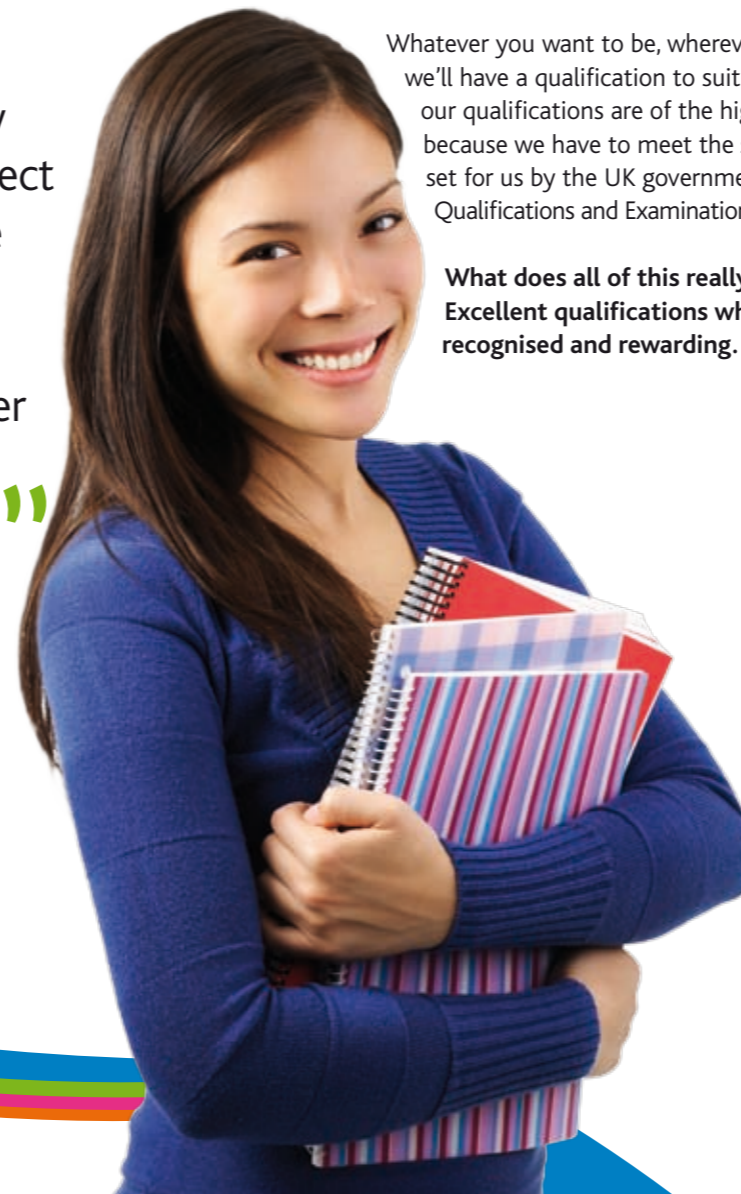
Whatever you want to be, wherever you want to study, we'll have a qualification to suit you. What's more, our qualifications are of the highest quality. That's because we have to meet the strict requirements set for us by the UK government's Office of the Qualifications and Examinations Regulator (Ofqual).

**What does all of this really mean for you? Excellent qualifications which are relevant, recognised and rewarding.**

## ➔ Edexcel's magic numbers

- **218,626** international students took Edexcel GCE A-levels in 2009
- **41,538** international students took Edexcel IGCSEs in 2009
- Our qualifications are delivered in **85** countries worldwide
- We award more than **1 million** vocational qualifications and process more than **9 million** exam scripts each year
- Our portfolio of BTECs, exclusive to Edexcel, includes approximately **5000** standard qualifications
- More than **100** professional bodies and institutions give exemption or membership to holders of Edexcel BTEC HND/C qualifications
- More than **70%** of degree programmes in the UK allow students with an Edexcel BTEC HND to progress directly onto their final year
- More than **200** universities worldwide recognise Edexcel BTEC

Source: Edexcel



# Edexcel qualifications – a guide

Every Edexcel qualification offers learners a number of options. With our wide range of academic and vocational qualifications available at every level, there is sure to be something to suit your goals and aspirations. But what will you choose? Read our guide to Edexcel qualifications to help you decide.

## Academic qualifications

### Edexcel IGCSE

IGCSE stands for International General Certificate of Secondary Education.

For many students, these are the first major qualifications that they take. IGCSEs are normally studied by students aged 14 – 16 years of age over a period of two years. They are assessed by examination and a student will normally study several IGCSEs at a time. IGCSEs are the international variant of the UK GCSE and are offered by Edexcel in a wide range of subjects, including Maths, English, Physics, Biology and Accounting. They are also the prelude to GCE A levels and BTEC Nationals.

### Edexcel GCE Advanced level

GCE A level stands for General Certificate of Education Advanced level.

If you're hoping to study an academic subject at university, then GCE Advanced (A) and Advanced Subsidiary (AS) levels might be for you. Available in a wide range of subjects, these are usually taken by students aged 16 – 19 years of age and are completed over a period of two years.

The majority of GCEs have a four-unit structure. Students usually take two units in the first half of the A level (AS) followed by two in the second half (A2). AS (Advanced Subsidiary) is the first half of an A level, and is also a qualification in its own right. A2 is the second half of an A level qualification, and is a progression from AS. These are assessed via a combination of examinations and coursework depending on the subject.

Students usually take three or four A levels at once and indeed three A-levels is the usual requirement for UK universities.

## Vocational qualifications

BTEC is a great choice for students wishing to experience a mix of theory and real-life practice. BTEC is the UK's most widely recognised suite of vocational qualifications. Exclusive to Edexcel, it has been a huge success since its inception in 1983 and is available for learners of all ages from 14 plus. Excitingly, BTECs are available in a wide range of subject areas.

### BTEC Introductory Certificate and Diploma

If you're motivated by a work-based course and aged 14 plus, BTEC Introductory could be for you. These offer an entry point to an industry sector and encourage the development of life skills. They are usually taken over two years.

### BTEC First

Suitable for students aged 14 plus who wish to focus on a particular work area. These are the equivalent of traditional IGCSE grades A\*-C and are usually taken over two years.

### BTEC National Award, Certificate and Diploma

If you're not sure whether to go to university or straight to work, this qualification can help you to keep your options open. BTEC National Award, Certificate and Diploma lets learners aged 16 plus study a subject in depth with a vocational focus, preparing you for both further study and the world of work. A BTEC National Award is equivalent to one GCE A level, a BTEC National Certificate is equivalent to two GCE A levels, and a BTEC National Diploma is equivalent to three GCE A levels. They are usually taken over two years.

### BTEC Higher National Certificate (HNC) and Diploma (HND)

BTEC Higher National Certificates (HNC) and Diplomas (HND) are aimed at learners aged 18 plus and are widely recognised by universities and professional bodies. Both qualifications will give you the management and high level technical skills that you'll need for your career.

The HNC is often studied part-time alongside full-time employment whilst the HND is studied full-time. Both qualifications are usually studied over two years, after which time learners often progress on to the third year of an undergraduate degree.

## Employability Suite

WorkSkills and Effective Behaviours for Work are the first two qualifications to fall into Edexcel's new employability suite of qualifications. These qualifications assess on the skills and behaviours needed for the workplace and are part of our ongoing commitment to improving learners' job prospects and performance at work.

These qualifications are normally studied over one to two years, although they may take less time than this depending on where and how your learning is taking place. They can be studied at school, college, university or in the workplace and are for learners aged 14 plus.

## Pearson Test of English

Pearson Test of English Academic (PTE Academic) is a computer-based test for non-native speakers of English who want to study at universities where English is the main language of instruction. The test is recognised by some of the world's leading institutions including Harvard Business School. It is also approved by the UK Border Agency for Tier 4 student visa applications. Most institutions require a PTE Academic score between 50 and 64. For more information visit

[www.pearsonpte.com/testme](http://www.pearsonpte.com/testme)

## What employers are saying about BTEC

"BTEC students fully display the majority of the necessary soft skills such as team working and public speaking"

"They provide the academic skills that underpin learning in the workplace"

"Employees learn more, feel better about themselves and contribute more to the company"

"Gives a good grounding in the subject with a clear mix of practical and theoretical knowledge"

"Good alternative to the A-level route"

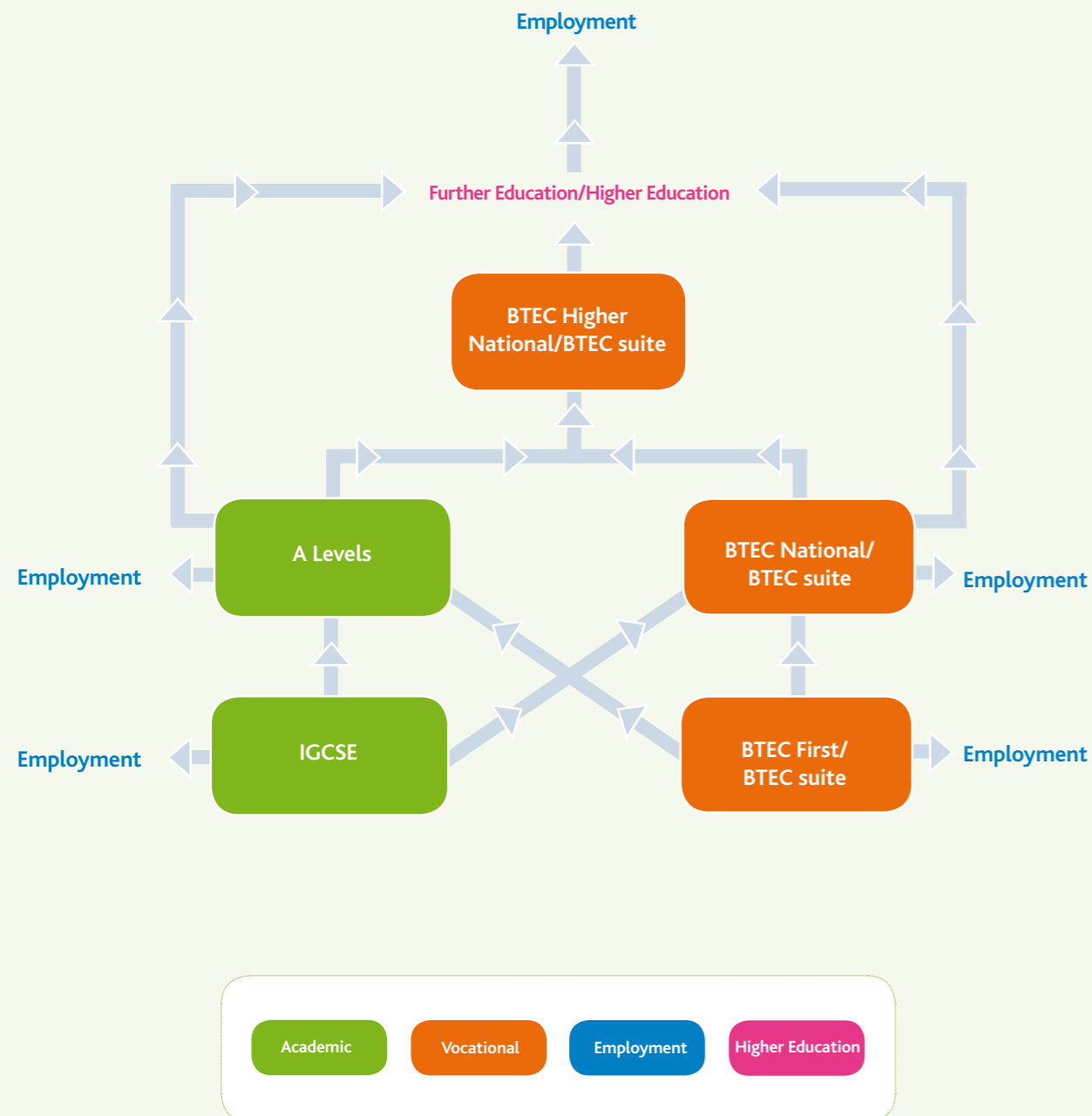
"Our employees were trained to a high standard by using the BTEC system"

"We'd struggle for employees if we didn't have the BTEC – it provides us with fit for purpose employees"

Source: Employer Views on BTEC Qualifications, Edexcel, November 2009

## Progression Pathways with Edexcel

Edexcel qualifications provide learners with a structured but also flexible pathway, allowing you to choose a direction that's right for you at every stage in your education and working life. This diagram shows the different learning tracks that you can take and how they lead on to further study and employment. Which track will you take?



# Where can Edexcel qualifications take you?

In the following sections you'll find some of the many universities, colleges, companies, industry associations and professional bodies around the world that recognise Edexcel qualifications.

These organisations welcome applications from students who have achieved Edexcel qualifications gained in the UK or other countries. In some cases students with good grades in specific Edexcel qualifications, for example Edexcel BTEC HND/Cs, may enjoy credit or exemptions from part of a degree programme, or be eligible for membership of a relevant professional body.

Edexcel's GCE A levels are accepted for entry purposes by all universities in the UK. In addition, universities in many countries, including the USA, Canada, South Africa and New Zealand have confirmed that they will accept applications from students with Edexcel GCE A levels. These include some of the world's top institutions, such as the University of Yale and the University of Sydney.

Of course, each organisation has its own requirements and will look at applications on an individual basis, so we've given you some links to help you find out more.

The following lists are current at the time of publication. Our recognition and progression pathways are constantly being updated as more and more universities and organisations choose to work with us. Please keep checking for updated lists at [www.edexcel.com/international/progression](http://www.edexcel.com/international/progression).

“ We found Edexcel to be proactive because they wanted to shape a BTEC for us in conjunction with Exeter College. Flybe needed a programme that developed not only the practical skills, but also the brainpower to be able to say an aircraft is fit to fly. People will come out of this programme with a £31,000 a-year job guaranteed as a licensed aircraft engineer. ”

Simon Witts, Director of Safety, Quality and Training, Flybe

# The Americas

## Universities - USA

The BTEC HND, along with IGCSE and A level, is widely recognised and understood in the USA and many institutions will grant advanced entry onto a same-subject degree course.

University at Buffalo, The State University of New York	www.buffalo.edu
University of Denver	www.du.edu
West Texas A&M University	www.tamu.edu
University of Tampa	www.ut.edu
St Catherine University	www.stkate.edu
East Carolina University	www.ecu.edu
Hawaii Pacific University	www.hpu.edu
Iowa State University	www.iastate.edu

## Universities - Canada

Subject to meeting minimum requirements, these universities will accept BTEC HND students onto degree courses.

Dalhousie University	www.dal.ca
Mount Saint Vincent University	www.msvu.ca
Laurentian University	www.laurentian.ca

### Statement of recognition: Harvard College, USA

#### Dear student

"We value predicted A-level... results along with any information that helps us form a complete picture of an applicant's academic interests and strengths."

# Asia

## Universities - Hong Kong

The Hong Kong Polytechnic University accepts BTEC NDs and HNDs as meeting our general requirements for admission to our full-time bachelor's degree programmes.

Hong Kong Polytechnic University	www.polyu.edu.hk
----------------------------------	------------------

## Universities - Malaysia

Help University College, Kuala Lumpur	www.help.edu.my
---------------------------------------	-----------------

## Employers - Malaysia

Scicom	www.scicom-intl.com
Shell	www.shell.com.my

## Professional bodies - Singapore

Singapore National Shippers Council	www.snscc.org.sg
-------------------------------------	------------------

## Universities - Vietnam

National Economic University, Hanoi	www.snscc.org.sg
-------------------------------------	------------------

### Statement of recognition: Singapore National Shippers Council

#### Dear student

"Edexcel are building a range of qualifications from A-level to Masters equivalent for the Singapore National Shippers Council. Utilising existing elements from qualifications in business, management and leadership and blending these with industry specific skills requirements to create a national qualifications framework. We are working with global professional bodies such as the World Shippers Forum, the American Institute for Logistics and the Cambridge Academy of Transport to enable learners to build their career from their first job to senior manager."

# Australasia

## Universities - Australia

Edexcel has received confirmation from the named universities in Australia that they recognise BTEC HNDs gained outside the UK and will welcome applications from students with such qualifications.

Curtain University, Sydney	www.curtain.edu.au
Edith Cowan University	www.ecu.edu.au
Murdoch University	www.murdoch.edu.au
University of New England (NSW)	www.une.edu.au
Queensland University of Technology	www.international.qut.edu.au
University of South Australia	www.unisa.edu.au
University of Technology, Sydney	www.uts.edu.au
University of Western Australia	www.uwa.edu.au

## Universities - New Zealand

The named universities will accept students onto their degree programmes subject to meeting entry requirements.

University of Canterbury	www.canterbury.ac.nz
University of Otago	www.otago.ac.nz

# Europe

## Universities - France

With appropriate grades students with a BTEC HND may progress into year 3 of a 4 year degree in – Fine Arts, Graphic Design, Photography  
Students with a Foundation Degree (Art & Design) may progress into year 2 of a 4 year degree, *IELTS of 6.5, or TOEFL 92 or higher is required.*

<b>Parson Paris School of Art and Design</b>	www.parsons-paris.com
--	-----------------------

## Universities - Germany

Upon successful completion of the BTEC HND, students can apply for the relevant programmes at Saxion University. The year of entry will depend on the transcripts of the individual student and their IELTS results.

<b>Saxion University</b>	www.saxion.edu
--------------------------	----------------

## Employers

<b>Intel</b>	UK and global	www.intel.com
<b>Escuela Superior de Turismo de Baleares</b>	Spain	www.etb-baleares.es
<b>Conrithia International Hotels</b>	Malta	www.corinthiahotels.com

### Statement of recognition: Saxion University of Applied Sciences

#### Dear student

"Saxion University accepts students from across the world who have Edexcel programmes. Upon successful completion of the BTEC HND students can apply for the relevant programmes at Saxion University."

# The Middle East and Africa

## Universities - UAE

### Heriot Watt University - www.hw.ac.uk

MA (Hons) / BA Accountancy & Finance	BEng (Hons) Mechanical Engineering	BA (Hons) Fashion Design
MA (Hons) / BA Business & Finance	BEng (Hons) Electronic & Electrical Engineering	BA (Hons) Fashion Marketing & Retailing
MA (Hons) / BA Management	BEng (Hons) Automotive Engineering	BEng (Hons) Civil Engineering
BBA (Hons) / BBA Bachelor of Business Administration		

### American University in the Emirates - www.aue.ae

AUE will grant credit to BTEC HND holders towards their degree programmes.

### Middlesex University, Dubai - www.mdx.ac.uk

Students with a BTEC HND merit/distinction profile will be considered for final year entry of the university honours degree programme.

## Employers

<b>Department for Tourism and Commerce</b>	Dubai	www.dubaitourism.ae
<b>Petroleum Development</b>	Oman	www.pdo.co.om
<b>Royal Guard of Oman Technical School</b>	Oman	www.rgotc.cjb.net
<b>Pioneer Foods</b>	South Africa	www.pioneerfoods.co.za
<b>Emirates Aviation College</b>	UAE	www.emiratesaviationcollege.com

## Universities - Syria

<b>Syrian Virtual University</b>	Syria	www.svuonline.org
----------------------------------	-------	-------------------

## Education and training authorities

<b>FoodBev SETA</b>	www.foodbev.co.za
---------------------	-------------------

### Statement of recognition: Middlesex University Dubai

#### Dear student

"Students who have completed the BTEC HND with distinctions and merits in several modules are eligible to apply for the final year of our honours degree programmes."

# United Kingdom

## Universities - UK

Edexcel has received confirmation from the following universities in the United Kingdom that they recognise BTEC HNDs gained outside the UK and will welcome applications from students with such qualifications.

Anglia Ruskin University	www.anglia.ac.uk
University of Bedfordshire	www.beds.ac.uk
University College Birmingham	www.ucb.ac.uk
The University of Bolton	www.bolton.ac.uk
Bath Spa University	www.bathspa.ac.uk
Bradford College (University Centre)	www.bradfordcollege.ac.uk
Bradford University	www.brad.ac.uk
University of Brighton	www.brighton.ac.uk
Buckinghamshire New University	www.bucks.ac.uk
Coventry University	www.coventry.ac.uk
Canterbury Christ Church University	www.canterbury.ac.uk
University of Central Lancashire	www.uclan.ac.uk
University of Derby	www.derby.ac.uk
De Montfort University	www.dmu.ac.uk
University of Glamorgan	www.glam.ac.uk
University of Gloucestershire	www.glos.ac.uk
University of Greenwich	www.gre.ac.uk
Guildhall College (UEL)	www.guildhall.ac.uk
Harper Adams University College	www.harper-adams.ac.uk
University of Hertfordshire	www.herts.ac.uk
University of Huddersfield	www.hud.ac.uk
University of Kent	www.kent.ac.uk
University of Lincoln	www.lincoln.ac.uk
Liverpool John Moores University	www.ljmu.ac.uk
London Metropolitan University	www.londonmet.ac.uk
London South Bank University	www.lsbu.ac.uk
Middlesex University	www.mdx.ac.uk
Manchester Metropolitan University	www.mmu.ac.uk
University of Northampton	www.northampton.ac.uk
Nottingham University	www.nottingham.ac.uk
Oxford Brookes University	www.brookes.ac.uk
University of Plymouth	www.plymouth.ac.uk
University of Portsmouth	www.port.ac.uk
Staffordshire University	www.staffs.ac.uk
University of Surrey	www.surrey.ac.uk
Swansea Metropolitan University	www.smu.ac.uk
Southampton Solent University	www.solent.ac.uk
St Patrick's College	www.st.patricks.ac.uk
University of Teesside	www.tees.ac.uk
University of Westminster	www.wmin.ac.uk
University of the West of England, Bristol	www.uwe.ac.uk
University of Wolverhampton	www.wlv.ac.uk
University of Worcester	www.worcs.ac.uk
University of Wales Institute	www.uwic.ac.uk
University of Wales, Newport	www3.newport.ac.uk

## Subject specific degrees

Acceptance to a university programme is at the discretion of the individual university

## Business related degrees

### Bath Spa University - www.bathspa.ac.uk

BA (Hons) Business & Management
---------------------------------

### Bournemouth University - www.bournemouth.ac.uk

BA (Hons) Business & Management	BA (Hons) Finance & Law	BA (Hons) Business & Management with Project Management
---------------------------------	-------------------------	---

### Bradford College (University Centre) - www.bradfordcollege.ac.uk

BA (Hons) Business Studies	BA (Hons) Marketing & Sales	BA (Hons) Human Resource Management
BA (Hons) Business Administration	BA (Hons) Accountancy	
BA (Hons) Financial Services	BA (Hons) Advertising & Campaign Management	

### Coventry University - www.coventry.ac.uk

BA (Hons) International Business	BA (Hons) Business Management	BA (Hons) Financial Services
BA (Hons) European Business	BA (Hons) Business Administration	
BA (Hons) Business & Marketing	BA (Hons) Accounting & Finance	

### University of Derby - www.derby.ac.uk

BA Financial Services	BA Business Management	
BA International Trade	BA Strategic Financial Management	

### University of Glamorgan - www.glam.ac.uk

BA Business Excellence	BA Business Excellence with Marketing	BA Business Excellence with Entrepreneurship
BA Business Excellence with Economics	BA Business Excellence with Purchasing & Supply	BA Business Excellence with International Studies
BA Business Excellence with Information Systems Management	BA Business Excellence with Human Resource Management	

### University of Gloucestershire - www.glos.ac.uk

BA (Hons) Accounting & Financial Management	BA (Hons) Strategic Business Management	BA (Hons) Marketing Management & Branding
---	---	---

### University of Greenwich - www.greenwich.ac.uk

BA (Hons) Business Administration	BA (Hons) Business with: Finance, Human Resource Management, International Business, Logistics, Marketing, Marketing Communications	BA (Hons) Human Resource Management
BA (Hons) Business Management		
BA (Hons) Marketing		

### Guildhall College (UEL) - www.guildhall.ac.uk

BSc (Hons) Business Administration
------------------------------------

## Business related degrees

### University of Hertfordshire - www.herts.ac.uk

BA (Hons) Business Administration	BA (Hons) International Business Administration	
-----------------------------------	---	--

### Middlesex University - www.mdx.ac.uk

BA International Business Administration	BA Business Enterprise & Entrepreneurship	BA Business
--	---	-------------

### University of Northampton - www.northampton.ac.uk

BA (Hons) Business & Management	BA (Hons) International Accounting	
BA (Hons) Marketing Management	BA (Hons) Human Resource Management	

### Oxford Brookes University - www.brookes.ac.uk

BA (Hons) Accounting & Finance	BA (Hons) Business Logistics	BA (Hons) Human Resources & Management
BA (Hons) Business & Management	BA (Hons) Business & International Finance	
BA (Hons) Business Innovation & Enterprise	BA (Hons) Business & Marketing Management	

### University of Plymouth - www.plymouth.ac.uk

BA Business Administration <i>With BTEC HND Business (Management), inc units in accounting, costing &amp; budgeting, marketing, HRM</i>	BA Business Administration <i>With BTEC HND Business (Finance) inc units in marketing, HRM, employee relations</i>	
--	---	--

### University of Portsmouth - www.port.ac.uk (Please see page 20 for more information on Portsmouth University business degrees.)

LLB Law	BA (Hons) Business Enterprise Systems	BA (Hons) Human Resource Management
LLB Law & Criminology	BA (Hons) Accounting	BA (Hons) Marketing
LLB Law & European Studies	BA (Hons) Accounting & Business	BA (Hons) Law with Business English
LLB Law & International Relations	BA (Hons) Accounting with Finance	BA (Hons) Business Economics with Law
LLB Law with Business	BA (Hons) Business Administration	BA (Hons) Human Resource Management
BA (Hons) Business Enterprise Development	BA (Hons) Business Studies	

### St Patrick's College - www.st.patricks.ac.uk

BA (Hons) Business Management		
-------------------------------	--	--

### Southampton Solent University - www.solent.ac.uk

BA (Hons) Business	BA (Hons) Business & Management	
BA (Hons) Business & E-Management	BA (Hons) Business & Finance	

### University of Teesside - www.tees.ac.uk

BA Business Management		
------------------------	--	--

## Computing related degrees

### Bath Spa University - www.bathspa.ac.uk

BSc (Hons) 3D Computer Generated Imagery: Modelling and Animation	BSc (Hons) 3D Computer Generated Imagery: Technical Illustration	BSc (Hons) Business Information Technology Systems
BSc (Hons) 3D Computer Generated Imagery: Architectural Visualisation	BSc (Hons) Applied Computing	

### Bournemouth University - www.bournemouth.ac.uk

BA (Hons) Business Computing Solutions	BA (Hons) Computing with Software Engineering	
--	---	--

### Bradford College (University Centre) - www.bradfordcollege.ac.uk

BSc (Hons) Computer Science / Information Systems		
---	--	--

### Coventry University - www.coventry.ac.uk

BSc (Hons) Business & Computing Systems		
---	--	--

### University of Derby - www.derby.ac.uk

BSc (Hons) Information & Communications Technology	BSc (Hons) Computing	BSc (Hons) Business Information Technology
--	----------------------	--

### University of Greenwich - www.greenwich.ac.uk

BA/BSc Computing or IT related degree <i>(depending on BTEC HND units taken)</i>		
--	--	--

### University of Hertfordshire - www.herts.ac.uk

BSc (Hons) Computing	BSc (Hons) Multimedia Technology	BSc (Hons) Information & Communication Technologies
BSc (Hons) Information Systems	BSc (Hons) Computer Systems & Software Engineering	
BSc (Hons) Business Information Technology	BSc (Hons) Computer Networking	BSc (Hons) Games & Entertainment Systems Software Engineering
BSc (Hons) Software Engineering	BSc (Hons) Internet Engineering & Web Management	

### Middlesex University - www.mdx.ac.uk

BSc (Hons) Electrical & Electronic Systems	BSc (Hons) Electronic Communication Systems	
BSc (Hons) Computer Systems Engineering	BSc (Hons) Robotics	

### University of Northampton - www.northampton.ac.uk

BSc (Hons) Computer Network Management & Design	BSc (Hons) Technology Management & Computing	BSc (Hons) E-commerce & Internet Systems (DL) – <i>(required to take Internet Server Management module)</i>
BSc (Hons) Internet Technology	BSc (Hons) Computing & Information Systems (DL) – <i>(required to take Object Orientated programming module)</i>	BSc (Hons) Business Information Systems (DL and on campus) – <i>(required to take Data Analysis &amp; Design module)</i>
BSc (Hons) Computing (on campus and Informatics)		
BSc Computing (Informatics)		

*Successful completion of BTEC HNDs in Electrical/Electronic Engineering to include 6 Merits and 2 Distinctions from BTEC HND year 2 and IELTS 6.0 (or equivalent)*

### Oxford Brookes University - www.brookes.ac.uk

BSc (Hons) Computing & Information Systems		
--	--	--

### University of Portsmouth - www.portsmouth.ac.uk

BSc (Hons) IT for Business / Internet Computing	BSc (Hons) Electronic Engineering	
---	-----------------------------------	--

## Engineering related courses

### Bournemouth University - www.bournemouth.ac.uk

BSc (Hons) Design & Engineering	BSc (Hons) Product Design Management
---------------------------------	--------------------------------------

### University of Derby - www.derby.ac.uk

BEng Manufacturing Engineering	BEng Civil & Infrastructure Engineering
--------------------------------	---

### University of Glamorgan - www.glam.ac.uk

BSc (Hons) Mechanical & Manufacturing Engineering	BEng (Hons) Digital Communications Engineering	BEng (Hons) Electronic Engineering
BSc (Hons) Civil Engineering	BEng (Hons) Electrical & Electronic Engineering	BEng (Hons) Mechatronic Engineering
BEng (Hons) Computer Systems Engineering	BEng (Hons) Electronic & Communication Engineering	BEng (Hons) Sound Engineering

### University of Greenwich - www.greenwich.ac.uk

BEng (Hons) Mechanical Engineering Technology	BEng (Hons) Engineering Business Management
BEng (Hons) Electrical & Electronic Engineering Technology	BEng (Hons) Marine Engineering Technology

### University of Plymouth - www.plymouth.ac.uk

BSc (Hons) Electrical & Electronic Systems (from BTEC HND to electrical, electronic and mechanical engineering)

### University of Portsmouth - www.portsmouth.ac.uk

BEng (Hons) Electrical Engineering	BEng (Hons) Construction Engineering Management
BEng (Hons) Communications Engineering	
<i>Successful completion of BTEC HNDs in Electrical/Electronic Engineering to include 6 Merits and 2 Distinctions from BTEC HND year 2 and IELTS 6.0 (or equivalent)</i>	<i>Successful completion of the BTEC HND in Civil Engineering with 6 Merits and IELTS 6.0 or equivalent</i>

## Tourism, sport, leisure and hospitality courses

### Bath Spa University - www.bathspa.ac.uk

Tourism Management	Food, Nutrition & Consumer Protection (Food Studies)	Diet & health
--------------------	--	---------------

### Bournemouth University - www.bournemouth.ac.uk

BA (Hons) International Hospitality & Tourism Management	BA (Hons) International Tourism Management	BSc (Hons) Sports Coaching & Development
BA (Hons) International Hospitality Management	BA (Hons) International Leisure Marketing	

### Bradford College (University Centre) - www.bradfordcollege.ac.uk

BSc (Hons) Diet, Nutrition & Health

### University College Birmingham - www.ucb.ac.uk

BA (Hons) Tourism Business Management	BA (Hons) Hospitality Tourism Management	BA (Hons) Salon Business Management
BA (Hons) Culinary Arts Management	BA (Hons) Hospitality & Tourism Business Administration	

### Coventry University - www.coventry.ac.uk

BA (Hons) International Tourism	BA (Hons) Hospitality Management
---------------------------------	----------------------------------

### University of Derby - www.derby.ac.uk

BA Tourism & Hospitality Management	BA International Spa Management
-------------------------------------	---------------------------------

### University of Gloucestershire - www.glos.ac.uk

BA (Hons) Strategic Hospitality Management	BA (Hons) Strategic Leisure Management	BA (Hons) Strategic Tourism Management
--	--	--

### University of Greenwich - www.greenwich.ac.uk

BA (Hons) Tourism Management

### Middlesex University - www.mdx.ac.uk

BA Tourism & Hospitality Management	BA International Tourism Management
BA Hospitality Management	BA International Tourism Management with Business

### University of Northampton - www.northampton.ac.uk

BA (Hons) Travel and Tourism Management

### University of Portsmouth - www.port.ac.uk

BA (Hons) Hospitality Management	BA (Hons) Hospitality Management with Tourism
----------------------------------	---

### St Patrick's College - www.st.patricks.ac.uk

BSc (Hons) International Tourism & Hospitality Management

### Southampton Solent University - www.solent.ac.uk

BA (Hons) Tourism Management

## Childhood studies

### Bath Spa University - www.ucb.ac.uk

BA (Hons) Early Childhood Studies

### Bournemouth University - www.bournemouth.ac.uk

BA (Hons) Early Childhood Studies (*progression from BTEC HND in Early Childhood Studies*)

## Fashion and textiles

### Bath Spa University - www.bathspa.ac.uk

BA (Hons) Textile Design for Fashion & Interiors

<b>Bournemouth University - www.bournemouth.ac.uk</b>
BA (Hons) Fashion & Textiles
<b>Bradford College (University Centre) - www.bradfordcollege.ac.uk</b>
BA (Hons) Contemporary Surface Design & Textiles (for fashion and interiors) (possibly year 3 depending on level of achievement and portfolio evidence)

## University of Portsmouth Business School programmes and Edexcel entry criteria

Edexcel qualification	Portsmouth Course	Criteria [includes IELTS]
<b>BTEC HND courses in:</b> Business Business (e-Business Strategies) Business (Finance) Business (Human Resource Management) Business (Information Technology) Business (Law) Business (Management) Business (Marketing)	<b>Year 1 entry to:</b> LLB Law LLB Law & Criminology LLB Law & European Studies LLB Law & International Relations LLB Law with Business BA (Hons) Business Enterprise Development BA (Hons) Business Enterprise Systems	Successful completion of the relevant BTEC HND with a minimum pass of 60%  and IELTS 6.0, or equivalent
	<b>Year 2 entry to:</b> BA (Hons) Accounting BA (Hons) Accounting & Business BA (Hons) Accounting with Finance	Successful completion of the relevant BTEC HND with an overall Merit profile  and IELTS 6.0, or equivalent
	<b>Year 2 entry to:</b> BA (Hons) Business Administration BA (Hons) Business Studies BA (Hons) Human Resource Management BA (Hons) Marketing	Successful completion of the relevant BTEC HND with 6 Merits, remainder Passes from BTEC HND year 2 – achieved at first sitting  and IELTS 6.0, or equivalent
<b>BTEC HND courses in:</b> Business Business (e-Business Strategies) Business (Finance) Business (Human Resource Management) Business (Information Technology) Business (Law) Business (Management) Business (Marketing) E-Business E-Business (Marketing) E-Business (Software implementation) E-Business (Strategy)	<b>Year 2 entry to:</b> BA (Hons) Business Enterprise Development BA (Hons) Business Enterprise Systems	Successful completion of the relevant BTEC HND with 75% Merits  and IELTS 6.0, or equivalent
<b>BTEC HND courses in:</b> Business Business (e-Business Strategies) Business (Finance) Business (Human Resource Management) Business (Information Technology) Business (Law) Business (Management) Business (Marketing)	<b>Year 2 entry to:</b> BA (Hons) Law with Business English BA (Hons) Business Economics with Law	Successful completion of the relevant BTEC HND with an Overall Pass  and IELTS 6.0, or equivalent
<b>BTEC HND courses in:</b> Business Business (e-Business Strategies) Business (Finance) Business (Human Resource Management) Business (Information Technology) Business (Law) Business (Management) Business (Marketing)	<b>Year 3 entry to:</b> BA (Hons) Business Administration	Successful completion of the relevant BTEC HND with 2 Distinctions, remainder Merits from BTEC HND year 2 – achieved at first sitting  and IELTS 6.0, or equivalent

Edexcel qualification	Portsmouth Course	Criteria [includes IELTS]
	<b>Year 3 entry to:</b> BA (Hons) Human Resource Management	Successful completion of the relevant BTEC HND with 4 Distinctions (including 2 specialist HRM units), remainder Merits from BTEC HND year 2 – achieved at first sitting  and IELTS 6.0, or equivalent
	<b>Year 3 entry to:</b> BA (Hons) Marketing	Successful completion of the relevant BTEC HND with 4 Distinctions (including 2 specialist Marketing units), remainder Merits from BTEC HND year 2 – achieved at first sitting  and IELTS 6.0, or equivalent
BTEC HND Hospitality Management BTEC HND Hospitality Management (Culinary Arts) BTEC HND Hospitality Management (Leisure & Tourism) BTEC HND Hospitality Management (Licensed Retail)	<b>Year 2 Entry to:</b> BA (Hons) Hospitality Management BA (Hons) Hospitality Management with Tourism	Successful completion of the relevant BTEC HND with at least 60% Merits  and IELTS 6.0, or equivalent
	<b>Year 3 Entry to:</b> BA (Hons) Hospitality Management BA (Hons) Hospitality Management with Tourism	Successful completion of the relevant BTEC HND with 2 Distinctions, remainder Merits in BTEC HND year 2 plus total of 48 weeks related work experience  and IELTS 6.0, or equivalent

## Entry to Year 2 (of a 3 year degree)

Acceptance to a university programme is at the discretion of the individual university

<b>Bradford College (University Centre) - www.bradfordcollege.ac.uk</b>		
BA (Hons) Accountancy	BA (Hons) Counselling & Psychology in Community Settings	BA (Hons) Contemporary Surface Design & Textiles (for fashion and interiors) (possibly year 3 depending on level of achievement and portfolio evidence)
BA (Hons) Advertising & Campaign Management	BA (Hons) Health & Social Welfare	
BA (Hons) Human Resource Management	BA (Hons) 3D Design (possibly year 3 depending on level of achievement & portfolio evidence)	BA (Hons) Fine Art (possibly year 3 depending on level of achievement and portfolio evidence)
BA (Hons) Education Studies (possible year 3 depending on HND award)	BA (Hons) Art & Design (possibly year 3 depending on level of achievement & portfolio evidence)	

<b>University of Glamorgan - www.glam.ac.uk</b>		
BA (Hons) Graphic Design, Illustration, Digital Media (possibly year 3 depending on level of achievement & portfolio evidence)	BA (Hons) Sport Management	BA Media Production
	BA (Hons) Tourism Management	BA Media Studies
BSc (Hons) Diet, Nutrition & Health	BA (Hons) Management & Business	BA Photography

<b>University of Gloucestershire - www.glos.ac.uk</b>		
BA Drama	BSc Sound Technology	BA Graphic Communications
BA Film	BA Popular Music	BSc Architectural Innovation & Technology
BSc Music Technology	BA Art Practice	BA TV & Film Set Design

<b>University of Portsmouth - www.port.ac.uk</b>		
BA (Hons) Accounting & Financial Management	BA (Hons) Business Management	BA (Hons) Marketing Management & Branding

<b>Southampton Solent University - www.solent.ac.uk</b>		
BA (Hons) Hospitality Management	BA (Hons) Tourism Management	BSc (Hons) Computing
BA (Hons) Leisure Management	BSc (Hons) Business Information Technology	

## Entry to Year 2 (of a 3 year degree)

### University of Teesside - www.tees.ac.uk

BEng (Hons) Construction Engineering Management	BEng (Hons) Civil Engineering	MEng (Hons) Civil Engineering
---	-------------------------------	-------------------------------

### University of Worcester - www.worcester.ac.uk

BSc Construction Management	BA (Hons) Social Welfare	BA (Hons) Business, Economics & Advertising
BA (Hons) Tourism Management	BSc (Hons) Health & Well Being	BA (Hons) Business, Economics & HRM*
BA (Hons) Health & Fitness Management	BA (Hons) Business Management	BA (Hons) Business, Economics & Public Relations
BA (Hons) Media Culture & Production	BA (Hons) Business, Accountancy & Advertising	BA (Hons) Business, Innovation & Accountancy
BA (Hons) Photography / Fine Art / Graphic Design / Interactive Media	BA (Hons) Business, Accountancy & Economics	BA (Hons) Business, Innovation & Advertising
BA Business Management (for some specialist routes)	BA (Hons) Business, Accountancy & HRM*	BA (Hons) Business, Innovation & HRM*
BEng Engineering (dependant on units studied and grade profile)	BA (Hons) Business, Accountancy & Marketing	BA (Hons) Business, Innovation & Management
BA / BSc Computing or IT related degree (for some specialist routes)	BA (Hons) Business, Accountancy & Public Relations	BA (Hons) Business, Innovation & Marketing
BA (Hons) Education Studies	BA (Hons) Business, Advertising & HRM*	BA (Hons) Business, Innovation & Public Relations
BA (Hons) Business, Advertising & Public Relations		

\*Human Resource Management

### University College Birmingham - www.ucb.ac.uk

BA (Hons) Business, HRM* & Public Relations	BA (Hons) Business, Management & Advertising	BA (Hons) Business, Marketing & Advertising
BA (Hons) Business, Leadership & Innovation	BA (Hons) Business, Management & Economics	BA (Hons) Business, Marketing & Economics
BA (Hons) Business, Leadership & HRM*	BA (Hons) Business, Management & HRM*	BA (Hons) Business, Marketing & HRM*
BA (Hons) Business, Leadership & Management	BA (Hons) Business, Management & Marketing	BA (Hons) Business, Marketing & Public Relations
BA (Hons) Business, Management & Accountancy	BA (Hons) Business, Management & Public Relations	BA (Hons) Events Management

\*Human Resource Management

## Entry to Year 3 (of a 3 year degree)

Acceptance to a university programme is at the discretion of the individual university

### Statement of recognition: UK Universities

#### Higher Education Funding Council for England (HEFCE), UK

"Since their development in the 1970s and 1980s, BTEC programmes have become valued and respected qualifications that remain popular in the FE sector. In addition, these programmes are quite rightly recognised and valued in the HE sector, with many students progressing to undergraduate study."

#### Nottingham Trent University, UK

"Nottingham Trent University recognises Edexcel BTEC HNDs gained outside the UK and welcomes applications from students with such qualifications for entry onto our degree programmes."

#### Sheffield Hallam University, UK

"Sheffield Hallam University accepts international students from Edexcel programmes delivered internationally. With the successful completion of the BTEC HND, students may apply for relevant degree programmes at the university."

### Bath Spa University - www.bathspa.ac.uk

Bachelors degree courses for year three entry are available in the following areas (subject to the exact subjects studied and which course the student is applying for):

3D Design Ceramics	Education (leading to PGCE Primary)	Health Studies
Art	Education Studies (Education, Early Years Education, International Education, Combined Awards)	History
Biology	English Literature	Human Nutrition
Business & Management	Environmental Science	Media Communications
Creative Arts	Fashion & Textile Design	Creative Music Technology
Creative Media Practice	Fashion Design	Performing Arts
Creative Music Technology	Film Screen Studies	Philosophy & Ethics
Creative Writing	Fine Art	Psychology
Cultural Studies	Food, Nutrition & Consumer Protection	Sociology
Dance	Geographic Information Systems	Study of Religions
Diet & Health	Geography	Textile Design Studies
Drama Studies	Graphic Communication	Tourism Management
Early Years Education (Work Based)		

### University College Birmingham - www.ucb.ac.uk

Require IELTS 6.0 or equivalent language qualification	Subject to the students having completed the compulsory modules of the BTEC HND in Travel & Tourism and studied at least five specialist modules from the groups of modules shown:
BA (Hons) Tourism Business Management	<ul style="list-style-type: none"> <li>• Tourism Destinations</li> <li>• Tour Operations Management or Visitor Attraction Management or Overseas Resort Management</li> <li>• Human Resource Management for Travel &amp; Tourism</li> <li>• PR &amp; Promotions in Travel &amp; Tourism</li> <li>• Passenger Transport Operations or Travel Services or Heritage &amp; Cultural Management or Tourism in Developing Countries or Incoming &amp; Domestic Tourism</li> </ul>
BA (Hons) Culinary Arts Management	Subject to at least 10 months industrial placement and completion of the compulsory modules of the BTEC HND in Hospitality Management (Culinary Arts) and studied at least 3 specialist modules from: <ul style="list-style-type: none"> <li>• Menu Planning &amp; Product Development</li> <li>• Planning &amp; Managing Food Production</li> <li>• World Cuisine</li> <li>• Creative Patisserie or Contemporary Gastronomy (double weighted), plus 3 specialist modules from:               <ul style="list-style-type: none"> <li>• Hospitality Operations Management</li> <li>• Small Business Enterprise</li> <li>• Catering Technology</li> <li>• Food Hygiene &amp; the Environment</li> </ul> </li> </ul>
BA (Hons) Hospitality Tourism Management	Subject to at least 10 months industrial placement and completion of the compulsory modules of the BTEC HND in Hospitality Management (Leisure & Tourism) plus at least six specialist modules from the groups of modules shown, with Hospitality Operations Management being a compulsory module: <ul style="list-style-type: none"> <li>• Marketing</li> <li>• Travel &amp; Tourism Environment or Tourism Development Planning</li> <li>• Tour Operations Management or Hospitality Operations Management</li> <li>• People Management</li> <li>• Facilities Management</li> <li>• Conference &amp; Banqueting Management or Contract &amp; Event Management</li> <li>• Introduction to Internet &amp; E-Business or On-Licensed Trade Management or Entertainment &amp; Venue Management or Heritage &amp; Cultural Management or Sport &amp; Leisure Tourism</li> </ul>
BA (Hons) Hospitality & Tourism Business Administration	Subject to the students having studied the compulsory modules from the BTEC HND in Hospitality Management plus at least five specialist modules from the groups shown below: <ul style="list-style-type: none"> <li>• Marketing or Sales Development &amp; Merchandising</li> <li>• Research Project</li> <li>• People Management</li> <li>• Small Business Enterprise</li> <li>• External Business Environment</li> <li>• Information Management &amp; Technology</li> </ul>

## Entry to Year 3 (of a 3 year degree)

### University College Birmingham - www.ucb.ac.uk

BA (Hons) Early Childhood Studies	<p>Acceptance to the final year is on the basis of students having studied the compulsory modules from the BTEC HND in Advanced Practice in Work with Children &amp; Families plus at least two specialist modules from one of the groups shown below:</p> <ol style="list-style-type: none"> <li>1. Health Promotion for Early Years Practitioners or Understanding Medical Conditions for Early Years Practitioners or Contemporary Issues in Child Health or Managing the Inspection; Or</li> <li>2. Managing the Early Years Curriculum or Project Management for Early Years Practitioners or Effective Resource Management; Or</li> <li>3. Promoting Numeracy Skills or Promoting Language Development or Developing Knowledge and Understanding of the World or Developing Play</li> </ol> <p>Plus UCB require one from Managing the Early Years Curriculum or Project Management for Early Years Practitioners or Effective Resources Management</p> <p>(Holders of the BTEC HND in Advanced Practice in Work with Children &amp; Families (Education) need only to address group 3)</p> <p>(Holders of the BTEC HND in Advanced Practice in Work with Children &amp; Families (Health) need only to address group 1)</p> <p>(Holders of the BTEC HND in Advanced Practice in Work with Children &amp; Families (Management) need to have studied the compulsory modules plus one specialist module from:</p> <p>Managing the Early Years Curriculum or Managing the Inspection or Effective Resource Management plus two specialist modules from one of the following groups: Promoting Numeracy Skills or Promoting Language Development or Developing Knowledge and Understanding of the World.</p>
BA (Hons) Salon Business Management	<p>Students must have studied the compulsory modules of the BTEC HND in Beauty Therapy Sciences plus four specialist modules from the groups shown below:</p> <ul style="list-style-type: none"> <li>• People Management or Training &amp; Development</li> <li>• Marketing Functions for Service Industries</li> <li>• Business Health Check or Management Accounting for Business &amp; Service Industries</li> </ul>

### Bournemouth University - www.bournemouth.ac.uk

BA (Hons) Soundtrack Production	BA (Hons) International Hospitality Management	BSc (Hons) Design & Engineering
BA (Hons) Radio Production	BA (Hons) International Tourism Management	BSc (Hons) Applied Computing
BA (Hons) Media Production	BA (Hons) International Leisure Marketing	BSc (Hons) Landscape Design
BA (Hons) International Events Management	BA (Hons) Photo Media (Photography / Film and Television)	BSc (Hons) Computing & Internet Technology
BA (Hons) International Retail Marketing	BA (Hons) Early Years Care & Education	BSc (Hons) Product Design Management
BA (Hons) International Business Communication	BA (Hons) Business & Management with Project Management	BSc (Hons) 3D Computer Generated Imagery: Modelling & Animation
BA (Hons) International Hospitality & Tourism Management	BSc (Hons) Sustainable Graphics and Packaging	BSc (Hons) 3D Computer Generated Imagery: Architectural Visualisation
BA (Hons) Fashion & Textiles	BSc (Hons) Sports Coaching & Development	BSc (Hons) 3D Computer Generated Imagery: Technical Illustration
BA (Hons) Business & Management	BSc (Hons) Health & Social Care	BSc (Hons) Animal Behaviour & Welfare
BA (Hons) Finance & Law	BSc (Hons) Business Information Technology Systems	

### Bradford College (University Centre) - www.bradfordcollege.ac.uk

With IELTS requirement of 6.0 or equivalent		
BA (Hons) Business Studies	BA (Hons) Public Services Management	BA (Hons) Combined Studies
BA (Hons) Business Administration	BA (Hons) Photography (progression from BTEC HND Photography)	BA (Hons) Early Childhood Studies (progression from BTEC HND in Early Childhood Studies)
BA (Hons) Financial Services	BA (Hons) Business Computing Solutions	
BA (Hons) Marketing & Sales	BA (Hons) Computing with Software Engineering	

### Coventry University - www.coventry.ac.uk

The courses below are designed for students looking for an International or European focus to their studies, and require study of English, French or Spanish.		
BA (Hons) International Business	BA (Hons) International Tourism	BA (Hons) Environmental Management
BA (Hons) European Business	BA (Hons) Hospitality Management	
BA (Hons) English Studies	BA (Hons) International Disaster Management	
The courses below have pre-requisites to join at Year 3.		
BA (Hons) Business & Marketing	BA (Hons) Business Administration	BA (Hons) Financial Services
BA (Hons) Business Management	BA (Hons) Accounting & Finance	

### University of Derby - www.derby.ac.uk

BA Tourism & Hospitality Management	BA Financial Services	BA Strategic Financial Management
BA International Spa Management	BA International Trade	BEng Manufacturing Engineering
BA Event Management	BA Business Management	BEng Civil & Infrastructure Engineering

### University of Glamorgan - www.glam.ac.uk

Entry on to the courses may be subject to additional requirements including English at IELTS 6.5 or equivalent.		
<b>Faculty of Advanced Technology, Department of Computing and Mathematical Science</b>		
BSc (Hons) Post BTEC HND degree Computer Science	BSc (Hons) Post BTEC HND degree Internet Computing	BSc (Hons) Post BTEC HND degree Software Engineering
BSc (Hons) Post BTEC HND degree Information Systems	BSc (Hons) Post BTEC HND degree Network Management & Security	
<b>Department of Electronics and Computer Systems Engineering</b>		
BSc Electrical & Electronic Engineering	BEng (Hons) Digital Communications Engineering	BEng (Hons) Mechatronic Engineering
BSc Information Technology	BEng (Hons) Electrical & Electronic Engineering	BEng (Hons) Sound Engineering
BSc Mechatronic Engineering	BEng (Hons) Electronic & Communication Engineering	BSc (Hons) Information Technology
BEng (Hons) Computer Systems Engineering	BEng (Hons) Electronic Engineering	
<b>Department of Engineering</b>		
BSc (Hons) Mechanical & Manufacturing Engineering	BSc (Hons) Civil Engineering	
<b>Exceptional students will be considered for entry onto the following awards:</b>		
BA Business Excellence	BA Business Excellence with Marketing	BA Business Excellence with Entrepreneurship
BA Business Excellence with Human Resource Management	BA Business Excellence with Purchasing & Supply	BA Business Excellence with International Studies
BA Business Excellence with Information Systems Management	BA Business Excellence with Economics	
<b>Faculty of Humanities and Social Sciences</b>		
The Faculty will accept direct entry onto year 3 of the following degree courses, on condition that a student has completed a BTEC HND in a relevant subject:		
BA Public Services	BSc Social Sciences	BA Humanities
<b>The Cardiff School of Creative and Cultural Industries</b>		
In exceptional cases, entry into year 3 of a BA course will be considered. Applications for the Foundation Degree in Creative Industries will be welcomed on successful completion of a BTEC HND in a relevant subject.		

### University of Gloucestershire - www.glos.ac.uk

Programmes of study to which students with specific Edexcel awards and an IELTS 6.0 overall, and in writing, may be considered for entry at Year 3:	BTEC HND Computing (ICT Systems Support) will lead onto BSc (Hons) Information & Communications Technology
BTEC HND Business will lead onto the Business Management route of: BA (Hons) Strategic Business Management	BTEC HND Computing (Software Development) will lead onto BSc (Hons) Information & Communications Technology
BTEC HND Business (Finance) will lead onto the Finance route of BA (Hons) Strategic Business Management	BTEC HND Hospitality Management will lead onto BA (Hons) Strategic Hospitality Management
Students who have opted to take all finance options on their BTEC HND Business (Finance) may be eligible to enter BA (Hons) Accounting & Financial Management	BTEC HND Hospitality Management (Culinary Arts) will lead onto BA (Hons) Strategic Hospitality Management
BTEC HND Business (Human Resource Management) will lead onto the Human Resource Management route of BA (Hons) Strategic Business Management	BTEC HND Hospitality Management (Leisure & Tourism) will lead onto BA (Hons) Strategic Leisure Management or BA (Hons) Strategic Tourism Management

## Entry to Year 3 (of a 3 year degree)

### University of Gloucestershire - www.glos.ac.uk

BTEC HND Business (Business Information Technology) will lead onto BSc (Hons) Information & Communications Technology	BTEC HND Hospitality Management (Licensed Retail) will lead onto BA (Hons) Strategic Hospitality Management
BTEC HND Business (Management) will lead onto the Business Management route of BA (Hons) Strategic Business Management	BTEC HND Leisure will lead onto BA (Hons) Strategic Leisure Management
BTEC HND Business (Marketing) will lead onto the Marketing route of BA (Hons) Strategic Business Management	BTEC HND Travel & Tourism Management will lead onto BA (Hons) Strategic Tourism Management
BTEC HND Computing (General) will lead onto BSc (Hons) Information & Communications Technology	

### University of Greenwich - www.gre.ac.uk

Merit/Distinction profile required		
BA (Hons) Business Administration	BA (Hons) Marketing	BSc (Hons) Internet Engineering & Web Management
BA (Hons) Business Management	BA (Hons) Marketing Communications	BSc (Hons) Information & Communication Technologies
BA (Hons) Marketing	BSc (Hons) Computing	BSc (Hons) Games & Entertainment Systems Software Engineering
BA (Hons) Human Resource Management	BSc (Hons) Information Systems	BEng (Hons) Mechanical Engineering Technology
BA (Hons) Tourism Management	BSc (Hons) Business Information Technology	BEng (Hons) Electrical & Electronic Engineering Technology
BA (Hons) Business with Finance	BSc (Hons) Software Engineering	BEng (Hons) Engineering Business Management
BA (Hons) Human Resource Management	BSc (Hons) Multimedia Technology	BEng (Hons) Marine Engineering Technology
BA (Hons) International Business	BSc (Hons) Computer Systems & Software Engineering	
BA (Hons) Logistics	BSc (Hons) Computer Networking	

### Guildhall College (with UEL) - www.guildhall.ac.uk

BSc (Hons) Business Administration

### University of Hertfordshire - www.herts.ac.uk

BA (Hons) English Language for Commercial Communication	BA (Hons) International Business Administration
BA (Hons) Business Administration	BSc (Hons) Computer Science / Information Systems

### Middlesex University - www.mdx.ac.uk

With a Merit profile at BTEC HND students will be admitted onto year 3 in:

BA International Business Administration	BA Business Enterprise & Entrepreneurship	BA Business
Students for the business related degrees must pass the following BTEC HND modules: Marketing, Managing Financial Resources and Decisions, Organisations and Behaviour, Business Environment, Business Decision Making and Business Strategy.		
BA Tourism & Hospitality Management	BSc (Hons) Information Technology	BSc (Hons) Business Information Systems and Management
BA Hospitality Management	BSc (Hons) Information Technology & Networking	BSc (Hons) Information Technology & Business Information Systems
BA International Tourism Management	BSc (Hons) Computer Networks	BSc (Hons) Business Information Technology
BA International Tourism Management with Business	BSc (Hons) Mobile Computing	

### University of Northampton - www.northampton.ac.uk

BA (Hons) Business & Management	BA (Hons) Marketing Management	BA (Hons) Human Resource Management
BA (Hons) Travel & Tourism Management	BA (Hons) International Accounting	BSc (Hons) Business & Computing Systems

### Oxford Brookes University - www.brookes.ac.uk

Merit profile with IELTS 6.5 and 6.0 in reading & writing.

BA (Hons) Accounting & Finance	BA (Hons) Business Logistics	BA (Hons) Human Resources & Management
BA (Hons) Business & Management	BA (Hons) Business & International Finance	
BA (Hons) Business Innovation & Enterprise	BA (Hons) Business & Marketing Management	

### University of Plymouth - www.plymouth.ac.uk

BA Business Administration	BSc (Hons) Computer Systems Engineering	BSc (Hons) Robotics
BSc (Hons) Electrical & Electronic Systems	BSc (Hons) Electronic Communication Systems	

### University of Portsmouth - www.port.ac.uk

BEng (Hons) Electrical Engineering	BEng (Hons) Communications Engineering	
Successful completion of BTEC HNDs in Electrical/Electronic Engineering to include 6 Merits and 2 Distinctions from BTEC HND year 2 and IELTS 6.0 (or equivalent)		
BEng (Hons) Construction Engineering Management		
Successful completion of the BTEC HND in Civil Engineering with 6 Merits and IELTS 6.0 or equivalent		
BSc (Hons) Computer Network Management & Design	BSc (Hons) Technology Management & Computing	BSc (Hons) E-commerce & Internet Systems (DL) – (required to take Internet Server Management module)
BSc (Hons) Internet Technology	BSc (Hons) Computing & Information Systems (DL) – (required to take Object Orientated programming module)	BSc (Hons) Business Information Systems (DL and on campus) – (required to take Data Analysis & Design module)
BSc (Hons) Computing (on campus and Informatics)		
BSc Computing (Informatics)		

### Southampton Solent University - www.solent.ac.uk

BA (Hons) Business	BA (Hons) Business & Finance	BSc (Hons) Manufacturing & Mechanical Engineering
BA (Hons) Business & E-Management	BSc (Hons) IT for Business / Internet Computing	BA (Hons) Tourism Management
BA (Hons) Business & Management	BSc (Hons) Electronic Engineering	

### University of Teeside - www.tees.ac.uk

BA Business Management	BA/BSc Computing or IT related degree (depending on BTEC HND units taken)	
------------------------	---	--

### University of Worcester - www.worcester.ac.uk

**Institute of Education.** Applicants with a relevant BTEC HND will be considered for Year 3 entry to the following degrees:

BA (Hons) Education (In-service)	BA (Hons) Education Studies
----------------------------------	-----------------------------

**Institute of Health, Social Care and Psychology.** Applicants with a relevant BTEC HND will be considered for Year 3 entry to the following degrees:

BA (Hons) Social Welfare	BSc (Hons) Health & Well Being
--------------------------	--------------------------------

**Institute of Humanities and Creative Arts.** Applicants with a relevant BTEC HND will be considered for Year 3 entry to the following degrees:

BA (Hons) Art & Design	BA (Hons) Top-up Degree Performance (Costume & Make-up)	BA (Hons) Creative Digital Media
BA (Hons) Film Studies		Other programmes as appropriate.

**Institute of Science and the Environment.** Applicants with a relevant BTEC HND will be considered for Year 3 entry to the following degrees:

BSc (Hons) Animal Care Science	BSc (Hons) Environmental Management	BSc (Hons) Horticulture
--------------------------------	-------------------------------------	-------------------------

Other Biological and Forensic Science programmes as appropriate.

**Institute of Sports and Exercise Science.** Applicants with a relevant BTEC HND will be considered for Year 3 entry to the following degrees:

BSc (Hons) Sports Coaching Science	BSc (Hons) Sports Studies	Other programmes as appropriate
------------------------------------	---------------------------	---------------------------------

#### Worcester Business School

**Business.** Applicants with a relevant BTEC HND will be considered for Year 3 entry to appropriate BA top up degrees:

BA (Hons) International Finance	BA (Hons) International Marketing
BA (Hons) International Human Resource Management	BA (Hons) International Business Management

**Computing.** Applicants with a relevant BTEC HND will be considered for Year 3 entry to the following appropriate BSc programmes (depending on the named BTEC HND award):

BSc (Hons) Computing	BSc (Hons) Computer Games & Multimedia Development	BSc (Hons) Web Development
BSc (Hons) Business Information Technology	BSc (Hons) Networks & Information Security	BSc (Hons) Business Systems Management

**University of Worcester** - www.worcester.ac.uk

All programmes require an English Language qualification of IELTS 6.0 or equivalent. Some may require IELTS 6.5 or equivalent. Some programmes may require a merit profile at BTEC HND, be subject to submission of an acceptable portfolio of the student's work. Some programmes may have pre-requisite modules and therefore require the student to take additional "bridging" modules. February (semester two) starts are available for some programmes. The University has the final decision whether to accept or decline an application.

## MBA progression

**University of Greenwich** - www.greenwich.ac.uk

Accepts Level 5 Professional Certificate and Diploma in Management Studies and Level 7 Advanced Professional Certificate and Diploma in Management Studies. Students may be eligible for certain exemptions; please ask the university for further details.

**Southampton Solent University** - www.solent.ac.uk

Accepts Level 5 Professional Certificate and Diploma in Management Studies and Level 7 Advanced Professional Certificate and Diploma in Management Studies. Students may be eligible for certain exemptions; please ask the university for further details.

**University of Northampton** - www.northampton.ac.uk

Welcomes holders of Level 7 Advanced Professional Certificate and Diploma in Management Studies. Qualification holders will be exempt from 60 credits of the programme.

**University of Gloucestershire** - www.glos.ac.uk

Completion of Level 7 Advanced Professional Certificate and Diploma in Management Studies will give credit towards an MBA or an MSc in International Management. Additional IELTS scores of 6.5 and work experience may be required.

## Professional bodies

The professional bodies listed recognise Higher National qualifications and may give exemptions to their professional body status. Please check with the professional body for further details

Academy of Executives and Administrators	www.group-ims.com
Academy of Multi-Skills	www.group-ims.com
Association of Accounting Technicians	www.aat.org.uk
Association of Building Engineers	www.abe.org.uk
Association of Certified Book-Keepers	www.icea.enta.net
Association of Chartered Certified Accountants	www.acca.org.uk
Association of Financial Controllers and Administrators	www.icea.enta.net
Association of International Accountants	www.aia.org.uk
Association of Professional Recording Services	www.aprs.co.uk
British Association of Sport and Exercise Sciences	www.bases.org.uk
British Computer Society	www.bcs.org
British Institute of Professional Photography	www.bipp.com
Chartered Institute of Architectural Technologists	www.ciat.org.uk
Chartered Institute of Bankers	www.cib.org.uk
Chartered Institute of Building	www.ciob.org.uk
Chartered Institution of Building Services Engineers	www.cibse.org
Chartered Institute of Environmental Health	www.cieh.org
Chartered Institute of Housing	www.cih.org
Chartered Institute of Management Accountants	www.cimaglobal.com
Chartered Institute of Marketing	www.cim.co.uk
Chartered Institute of Public Finance and Accountancy	www.cipfa.org.uk
Chartered Institute of Purchasing and Supply	www.cips.org

Chartered Institution of Water and Environmental Management	www.ciwem.org
Chartered Management Institute	www.managers.org.uk
Chartered Quality Institute	www.cqi.org
Chartered Society of Designers	www.csd.org.uk
Communication, Advertising and Marketing Education Foundation Ltd	www.camfoundation.com
Council for Professions Supplementary to Medicine	www.cpsm.org.uk
Creative and Cultural Skills	www.ccshills.org.uk
Engineering Council	www.engc.org.uk
Federation of Holistic Therapies	www.fht.org.uk
Institute of Administrative Management	www.instam.org
Institute of Automotive Engineer Assessors	www.iaea.uk.com
Institute of Biology	www.iob.org
Institute of Chartered Accountants in England and Wales	www.icaew.co.uk
Institute for Chartered Secretaries and Administrators	www.isca.org.uk
Institute of Clerks of Works of Great Britain Incorporated	www.icwgb.org
Institute of Cost and Executive Accountants	www.ices.enta.net
Institute of Financial Accountants	www.ifa.org.uk
Institute of Financial Services	www.ifsllearning.com
Institute of Healthcare Engineering and Estate Management	www.iheem.org.uk
Institute of Highway Incorporated Engineers	www.ihie.org.uk
Institute of Horticulture	www.horticulture.org.uk
Institute of Hospitality	www.instituteofhospitality.org.uk
Institute of Leadership and Management	www.i-l-m.com
Institute of Legal Executives	www.ilex.org.uk
Institute for the Management of Information Systems	www.imis.org.uk
Institute of Management Services	www.ims-productivity.com
Institute of Management Specialists	www.group-ims.com
Institute of Manufacturing	www.group-ims.com
Institute of Marine Engineering, Science and Technology	www.imarest.org
Institute of Mathematics and its Applications	www.ima.org.uk
Institute of Measurement and Control	www.instmc.org.uk
Institute of the Motor Industry	www.motor.org.uk
Institute of Personnel and Development	www.cipd.co.uk
Institute of Plumbing and Heating Engineering	www.iphe.org.uk
Institute of Refrigeration	www.iior.org.uk
Institute of Revenues, Rating and Valuation	www.irrv.org.uk
Institute of Sport and Recreation Management	www.isrm.co.uk
Institute of Sports, Parks and Leisure	www.ispal.org.uk
Institute of Transport Administration	www.iota.org.uk
Institution of Agricultural Engineers	www.iagre.org
Institution of Chemical Engineers	www.icheme.org
Institution of Civil Engineering	www.ice.org.uk
Institution of Civil Engineering Surveyors	www.ices.org.uk
The Institution of Engineering and Technology	www.iet.org.uk
Institution of Engineering Designers	www.ied.org.uk
Institution of Gas Engineers and Managers	www.igem.org.uk
Institution of Incorporated Engineers	www.engineeringtalk.com
Institution of Lighting Engineers	www.ile.org.uk
Institution of Materials, Minerals and Mining	www.iom3.org
Institution of Structural Engineers	www.istructe.org.uk
Nursing and Midwifery Council	www.nmc-uk.org
Pensions Management Institute	www.pensions-pmi.org.uk
Professional Business and Technical Management	www.group-ims.com

## Professional bodies

Royal Aeronautical Society	www.aerosociety.com
Royal Institution of Chartered Surveyors	www.rics.org
Royal Institution of Naval Architects	www.rina.org.uk
Royal Society of Chemistry	www.rsc.org
Society of Dyers and Colourists	www.sdc.org.uk
Society of Operations Engineers	www.soe.org.uk
Tourism Society	www.tourismsociety.org
Welding Institute	www.twi.co.uk

### Statement of recognition: UK professional bodies

#### Federation of Holistic Therapists

"The Federation of Holistic Therapists (FHT) recognises BTEC First qualifications through to HND Level in Beauty Therapy and related subjects as meeting content and qualification requirements for membership to the FHT."

#### Institute of Sports, Parks and Leisure

"ISPAL recognises the BTEC HND in Sport and Recreation Management and related subjects as meeting the qualification requirements for professional membership of the Institute, and have been assured that international delivery endures the same quality assurance rigour as in the UK."

#### Chartered Management Institute

"When you pass your BTEC qualification you are guaranteed fast-tracked membership of the Chartered Management Institute – the UK's leading body for professional managers."

➔ **Now it's time for you to take a step in the right direction...**

➔ You've seen how Edexcel's recognition and progression pathways can direct you towards a better future. Now it's time to find out more and enrol on one of our qualifications.

To find out more about Edexcel and where you can study our qualifications, visit [www.edexcel.com/international](http://www.edexcel.com/international) or contact your regional office for more information:

**Australasia:** [edexcel@pearson.com.au](mailto:edexcel@pearson.com.au)

**Europe:** [europe@edexcel.com](mailto:europe@edexcel.com)

**Indian Subcontinent:** [subcontinent@edexcel.com](mailto:subcontinent@edexcel.com)

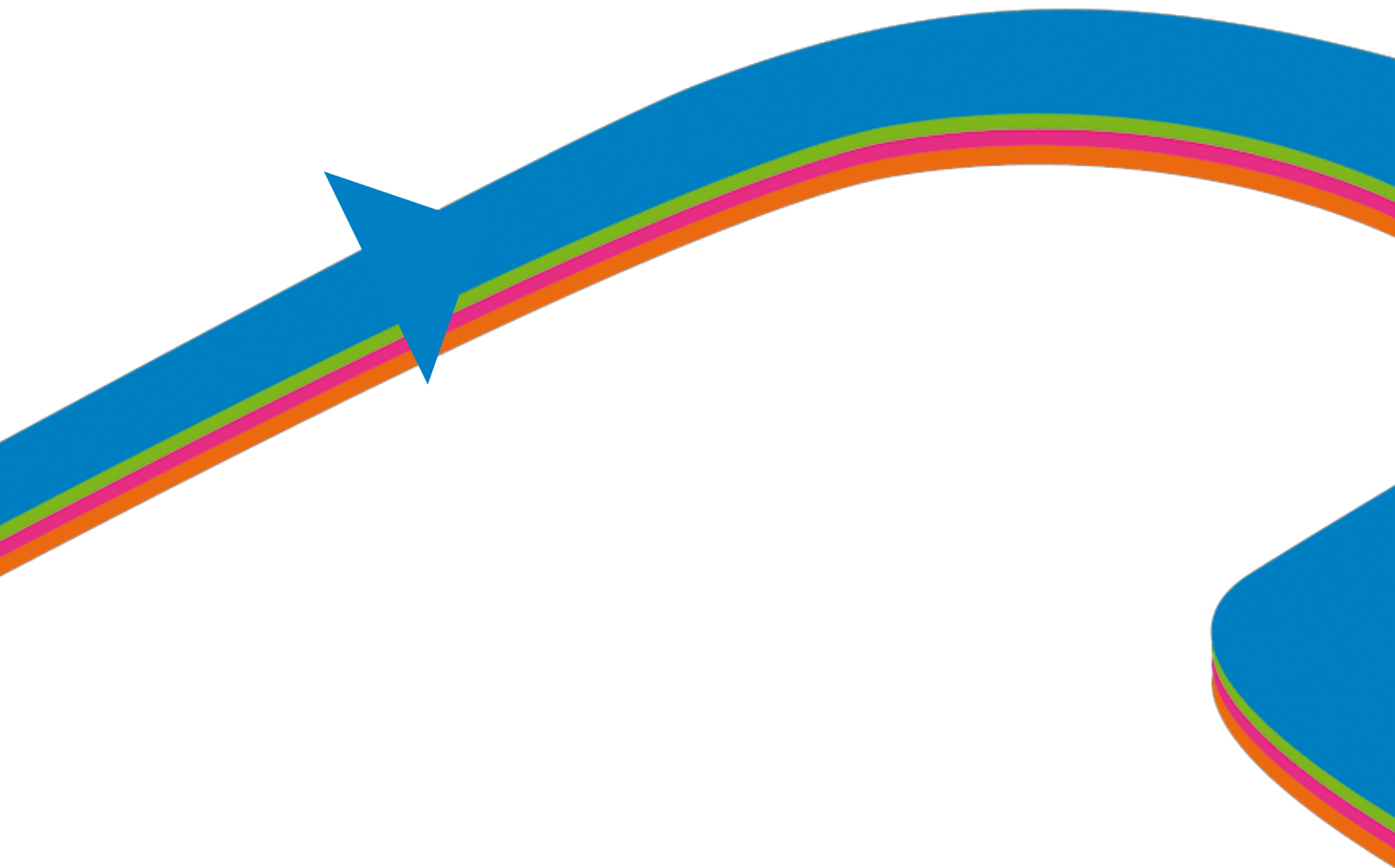
**Latin America:** [latinamerica@edexcel.com](mailto:latinamerica@edexcel.com)

**Middle East, North Africa and the Caribbean:** [mea@edexcel.com](mailto:mea@edexcel.com)

**North Asia:** [china@edexcel.com](mailto:china@edexcel.com)

**South Asia:** [edexcel.asia@edexcel.org.my](mailto:edexcel.asia@edexcel.org.my)

**Southern Africa:** [info@edexcel.org.za](mailto:info@edexcel.org.za)



#### **About Edexcel**

Edexcel is a Pearson company and the UK's largest awarding body. We offer academic and vocational qualifications and testing to schools, colleges, employers and other places of learning in 85 countries worldwide.

Edexcel Limited. Registered in England and Wales No. 4496750  
Registered Office: 190 High Holborn, London WC1V 7BH.  
VAT Reg No. 278537121  
Publication code: Z025323

#### **Edexcel**

190 High Holborn,  
London WC1V 7BH

[www.edexcel.com/international](http://www.edexcel.com/international)

**edexcel**   
advancing learning, changing lives

A PEARSON COMPANY

